

Newmade
新美达

广州新美达清洁用品有限公司

2020年第一期

Newmade
新美达

2020 第1期
CATALOGUE

广州新美达清洁用品有限公司
Guangzhou Newmade Cleaning Products Co., Ltd



广州新美达清洁用品有限公司

Guangzhou Newmade Cleaning Products Co., Ltd

地址: 广州市花都区花山镇洛场工业园 邮编: 510880
ADD: Luochang Industrial Zone, Huashan Town, Huadu District,
Guangzhou, 510880, China

电话(Tel): +86-20-2296 4688

传真(Fax): +86-20-2296 4678

E-mail: newmadecleaning@hotmail.com

Http://www.newmade.net

由于印刷关系, 画册内产品颜色可能与实物有所差异, 请以实物为准。
本公司产品不断创新改良, 如参数有所变动, 恕不另行通知。
The color of product will look slightly different to the real products when printing.
Our products will be improved continuously, if the datas changed, we may not be able to inform you.



公司网站
Company website



公司微官网
WeChat Official Accounts

卓越品质 立足全球 成就无限

ISSA MEMBER[®]
The Experts
on Cleaning and Maintenance
美国国际清洁卫生协会会员

卓越品质 立足全球 成就无限

Newmade
新美达

C 企业简介 Company profile

广州新美达清洁用品有限公司位于广州市花都区花山镇，距广州白云机场仅8公里，是一家专业从事研发，生产，销售清洁用品的生产企业。

自公司成立以来，我们投入了大量的时间与精力去研究产品及客户要求，从而使得公司所生产的产品均为市场接受度高，销量好的优质产品，深受客户青睐。此外，对产品及用客户要求的认真研究，加上经验丰富的专业人员也使得我们有能力按照客户的要求生产符合其市场特点的产品。我们重视客户的意见与要求，也欢迎广大客户为我们提出各种宝贵意见和建议。

我们深信，只有提供优质的产品，合理的，具有竞争力的价格，良好的服务，才能与客户达成双赢，从而使公司与客户一起共同成长。

广州新美达清洁用品有限公司期待您的加入，让我们携手共创美好的清洁空间。

Guangzhou Newmade Cleaning Products Co., Ltd locates at Huashan Town, Huadu District, which is about 8km's far from Guangzhou Baiyun Airport. it is specialized in manufacturing and selling cleaning products. From the day of company's setting up, we spent plenty of times on studying cleaning products and customers' demand, so, all our products are high quality products and well acceptable in the market and have great demand. Moreover, with this studying and our experienced staff, we have the ability to manufacture products according to customers' requirements so that those products can meet the needs of their markets. We value customers advise and requirements. And we appreciate those customers who bring us various comments and suggestions.

We believe that only we supply high quality products with competitive prices and good service can make both customers and us to reach a win-win status and finally this will make us to grow with our valued customers.

Welcome to join in Guangzhou Newmade Cleaning Products Co., Ltd and become our valued customers, let's work together to create a wonderful cleaning world.

C 目录 Contents



机器设备系列
Equipment series 01-24



机器配件系列
Accessories of equipments 25-33



榨水车系列
Wringer trolley series 34-39



清洁车系列
Multifunction cart series 40-45



垃圾桶系列
Garbage can series 46-55



告示牌系列
Warning sign series 56-57



清洁工具系列
Cleaning tools series 58-71



卫浴系列
Sanitary product series 72-78



清洁剂系列
Cleanser series 79-84



H8101 新霸洗地机 (电瓶式)
Walk-behind Scrubber Dryer (With battery)

H8201 新霸洗地机 (电线式)
Walk-behind Scrubber Dryer (With cable)

集喷洒、地面清洁及污水回收于一体，清洁效率高，吸力强大，可广泛应用于宾馆酒店，车站，工厂，超市，大型购物中心，学校等场所。

This machine can spray water, clean floor and suck water in the same time, it is ideal for cleaning in hotels and restaurants, bus and train stations, factories, supermarkets, shopping malls, hospitals, schools, and other institutions.

产品性能优点 Specifications



操作面板简单明了，控制方便简单易操作。
Control panel with intuitive display and buttons makes an easy operation.



过载保护开关，能有效保护马达。
Overload protection switch makes the machine operation safely.



侧翻式污水箱设计，方便更换电池及检修。
Rollover design of dirty water tank makes the battery changing and checking become easily.



污水箱内设水满装置，能有效保护马达。
Dirty water full device can protect the suction motor.



水位指示管设计，让清水水位一目了然。
Water level indication tube will keep you updated the level of dirty water.



铸铝刷盘罩，结实耐用。
Aluminum plate is strong and durable.

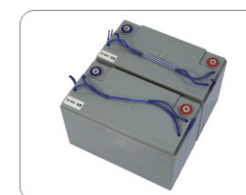
产品技术参数 Technical Specifications

	H8101		H8201		型号 Item No	H8101	H8201
	H8101	H8201	H8101	H8201		H8101	H8201
刷盘直径 Brush diameter	510mm		吸水马达功率 Suction motor power	450W	行走速度 Walking speed	0-4.5KM/H	
吸水宽度 Suction width	750mm		马达吸力 Suction	1500mm H ₂ O	工作噪音 Working noise	70+/-3(dbA)	
清洗宽度 Cleaning width	510mm		电池 Battery	2X12V 120AH	驻车坡度 Parking slope	≤2%	
清洁效率 Efficiency	1750m ² /H		充电器 Charger	24V 10A	整机尺寸 Dimension	1175X565X1000mm	
清水箱容量 Clean water tank capacity	40L		电池持续工作时间 Working time	3-3.5H	净重(连配件) N.W.(with accessories)	148KGS	
污水箱容量 Dirty water tank capacity	45L		充电时间 Charge time	8H	包装尺寸 Packing size	120X63X113CM	
刷盘转速 Brush speed	200 RPM		电压 Voltage	24V	包装数量 Packing	1台/板1PC/Pallet	
刷盘马达功率 Brush motor power	500W		电线长度 Cable length	25M	颜色 Color	蓝Blue	

标准配件 Standard accessories



H8905 洗地机吸水套扒
H8905 Suction squeegee set



H8903 蓄电池
H8903 Battery



H8916 充电器
H8916 Charger



H6578 20"针座
H6578 20"Pad holder



H6577 20"洗地刷
H6577 20"Floor brush



H8102 新霸洗地机(电瓶式)
Walk-behind Scrubber Dryer (With battery)

H8202 新霸洗地机(电线式)
Walk-behind Scrubber Dryer (With cable)

集喷洒、地面清洁及污水回收于一体，清洁效率高，吸力强大，可广泛应用于宾馆酒店，车站，工厂，超市，大型购物中心，学校等场所。

This machine can spray water, clean floor and suck water in the same time, it is ideal for cleaning in hotels and restaurants, bus and train stations, factories, supermarkets, shopping malls, hospitals, schools, and other institutions.

产品性能优点 Specifications



大容量水箱，有效减少换水次数。
Big capacity tanks can decrease times of changing water.



操作面板简单明了，控制方便简单易操作。
Control panel with intuitive display and buttons makes an easy operation.



污水箱内设水满装置，能有效保护马达。
Dirty water full device can protect the suction motor.



水位指示管设计，让清水水位一目了然。
Water level indication tube will keep you updated the level of dirty water.



可调泄压阀，可防止因气压过大而导致污水箱破裂。
Adjustable pressure relief valve avoids the dirty water tank broken due to the high pressure.

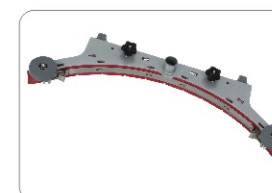


外置充电接口，管道布局合理。
The battery charge interface is installed outside and the hose position design is rational.

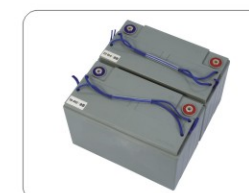
产品技术参数 Technical Specifications

	H8102 H8202		H8102 H8202		H8102 H8202	
	H8102	H8202	H8102	H8202	H8102	H8202
刷盘直径 Brush diameter	510mm		吸水马达功率 Suction motor power	450W	行走速度 Walking speed	0-4.5KM/H
吸水宽度 Suction width	750mm		马达吸力 Suction	1500mm H ₂ O	工作噪音 Working noise	70+/-3(dBA)
清洗宽度 Cleaning width	510mm		电池 Battery	2X12V 120AH	驻车坡度 Parking slope	≤2%
清洁效率 Efficiency	1750m ² /H		充电器 Charger	24V 10A	整机尺寸 Dimension	1270X565X1027mm
清水箱容量 Clean water tank capacity	50L		电池持续工作时间 Working time	3-3.5H	净重(连配件) N.W.(with accessories)	144KGS
污水箱容量 Dirty water tank capacity	55L		充电时间 Charge time	8H	包装尺寸 Packing size	120X63X113CM
刷盘转速 Brush speed	200 RPM		电压 Voltage	24V	包装数量 Packing	1台/板1PC/Pallet
刷盘马达功率 Brush motor power	500W		电线长度 Cable length	25M	颜色 Color	蓝Blue

标准配件 Standard accessories



H8905 洗地机吸水套扒
H8905 Suction squeegee set



H8903 蓄电池
H8903 Battery



H8916 充电器
H8916 Charger



H6578 20"针座
H6578 20"Pad holder



H6577 20"洗地刷
H6577 20"Floor brush



H8301 新霸驾驶式洗地车 (小号)
Ride-on Scrubber Dryer(S)

集喷洒、地面清洁及污水回收于一体，清洁效率高，吸力强大，可广泛应用于宾馆酒店，车站，工厂，超市，大型购物中心，学校等场所。

This machine can spray water, clean floor and suck water in the same time, it is ideal for cleaning in hotels and restaurants, bus and train stations, factories, supermarkets, shopping malls, hospitals, schools, and other institutions.

产品性能优点 Specification



操作面板不会跟着方向盘转动，便于操作。
Control panel does not turn with the steering wheel.



急停开关，按下停止，向右旋转复位。
Emergency stop switch, push then stop, turn right to reset.



可翻转式座垫设计，座垫下是工具箱。
The space under the seat can be used as tool box.



推拉式刷盘、水刮手柄，前推为下降，后拉为上升。
The brush/suction squeegee will lift/drop when you push/pull the handle



可调泄压阀，可防止因气压过大而导致污水箱破裂。
Adjustable pressure relief valve avoids the dirty water tank broken due to the high pressure.

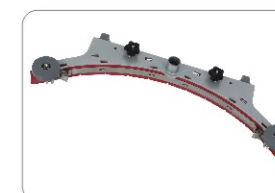


合理的管道布局，能有效避免水管交缠，使水刮摆动更加自如。
The rational design of hoses position avoid the hoses intertwine.

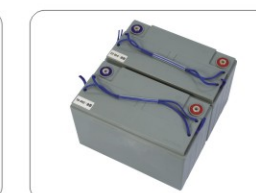
产品技术参数 Technical Specifications

刷盘直径 Brush diameter	510mm	吸水马达功率 Suction motor power	450W	工作噪音 Working noise	65(dbA)
吸水宽度 Suction width	750mm	驱动马达功率 Running motor power	500W	最大爬坡度 Max Gradeability	10%
清洗宽度 Cleaning width	510mm	马达吸力 Suction	1500mm H ₂ O	整机尺寸 Dimension	1250X595X1170mm
清洁效率 Efficiency	2200m ² /H	电池 Battery	2X12V 120AH	净重(连配件) N.W.(with accessories)	190KGS
清水箱容量 Clean water tank capacity	70L	充电器 Charger	24V 10A	包装尺寸 Packing size	145X65X120CM
污水箱容量 Dirty water tank capacity	75L	电池持续工作时间 Working time	3.5-4.5H	包装数量 Packing	1台/板1PC/Pallet
刷盘转速 Brush speed	200 RPM	充电时间 Charge time	10H		
刷盘马达功率 Brush motor power	550W	行走速度 Walking speed	0-6KM/H		

标准配件 Standard accessories



H8905 洗地机吸水套扒
H8905 Suction squeegee set



H8903 蓄电池
H8903 Battery



H8916 充电器
H8916 Charger



H6578 20"针座
H6578 20"Pad holder



H6577 20"洗地刷
H6577 20"Floor brush



H8302 新霸驾驶式洗地车 (中号)
Ride-on Scrubber Dryer (M)

集喷洒、地面清洁及污水回收于一体，清洁效率高，吸力强大，可广泛应用于宾馆酒店，车站，工厂，超市，大型购物中心，学校等场所。

This machine can spray water, clean floor and suck water in the same time, it is ideal for cleaning in hotels and restaurants, bus and train stations, factories, supermarkets, shopping malls, hospitals, schools, and other institutions.

产品性能优点 Specification



操作面板不会跟着方向盘转动，便于操作。
Control panel does not turn with the steering wheel.



急停开关，按下停止，向右旋转复位。
Emergency stop switch, push then stop, turn right to reset.



可翻转式座垫设计，座垫下是工具箱。
The space under the seat can be used as tool box.



推拉式刷盘、水刮手柄，前推为下降，后拉为上升。
The brush/suction squeegee will lift/drop when you push/pull the handle



可调泄压阀，可防止因气压过大而导致污水箱破裂。
Adjustable pressure relief valve avoids the dirty water tank broken due to the high pressure.

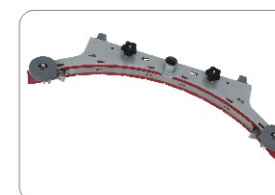


合理的管道布局，能有效避免水管交缠，使水刮摆动更加自如。
The rational design of hoses position avoid the hoses intertwine.

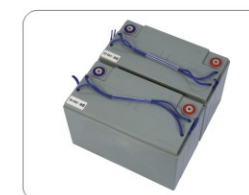
产品技术参数 Technical Specifications

刷盘直径 Brush diameter	450mm	吸水马达功率 Suction motor power	550W	工作噪音 Working noise	65(dbA)
吸水宽度 Suction width	1100mm	驱动马达功率 Running motor power	900W	最大爬坡度 Max Gradeability	10%
清洗宽度 Cleaning width	860mm	马达吸力 Suction	1500mm H ₂ O	整机尺寸 Dimension	1545X915X1245mm
清洁效率 Efficiency	2200m ² /H	电池 Battery	4X6V 200AH	净重(连配件) N.W.(with accessories)	350KGS
清水箱容量 Clean water tank capacity	130L	充电器 Charger	24V 10A	包装尺寸 Packing size	170X97X129CM
污水箱容量 Dirty water tank capacity	150L	电池持续工作时间 Working time	3.5-4.5H	包装数量 Packing	1台/板1PC/Pallet
刷盘转速 Brush speed	200 RPM	充电时间 Charge time	10H		
刷盘马达功率 Brush motor power	550W	行走速度 Walking speed	0-6KM/H		

标准配件 Standard accessories



H8915 洗地机吸水套扒
H8915 Suction squeegee set



H8904 蓄电池
H8904 Battery



H8916 充电器
H8916 Charger



H6572 18"针座
H6572 18"Pad holder



H6571 18"洗地刷
H6571 18"Floor brush

产品性能优点

- > 不锈钢桶身，坚固耐用，不易生锈
- > 配备静音型马达，吸力强劲
- > 配件齐全，方便耐用
- > 附加尘隔袋，易于清理及有效防止灰尘损坏机件
- > 四轮底盘机架，外形美观，轻巧灵活
- > 适用于酒店宾馆、小型工厂及各类清洁行业

SPECIFICATION

- Stainless steel tank,solid,durable and not easy to be rusty.
- Carry with low noise,powerful suction and long runtime motor.
- Carry with full set high quality standard accessories.
- The cloth filter inside let you to clean the vaccum easier and it can protect the vacuum from dust damage.
- The four-wheel base make the movement flexible.
- Use for restaurants,hotels,small factories and other cleaning fields.



H6001 15L吸尘吸水机
15L Wet&dry vacuum cleaner



H6002 30L吸尘吸水机
30L Wet&dry vacuum cleaner



H6003 30L吸尘吸水机
30L Wet&dry vacuum cleaner

产品性能优点

- > 不锈钢桶身，坚固耐用，不易生锈
- > 配备静音型马达，吸力强劲
- > 配件齐全，方便耐用
- > 大容量桶身，配备放水喉
- > 附加尘隔袋，易于清理及有效防止灰尘损坏机件
- > 宽大轮盘及车架，外形美观，灵活稳定
- > 适用于大型车间、厂房、商场及各类清洁行业

SPECIFICATION

- Stainless steel tank,solid,durable and not easy to be rusty.
- Carry with low noise,powerful suction and long runtime motors.
- Carry with full set high quality standard accessories.
- Big capacity tank with a watershoot.
- The cloth filter inside let you to clean the vaccum easier and it can protect the vacuum from dust damage.
- The big four-wheel base trolley make the movement flexible.
- Use for big workshops,big factories,shopping malls and other cleaning fields.



H6004 70L吸尘吸水机
70L Wet&dry vacuum cleaner



H6005 80L三马达吸尘吸水机
80L 3 motor Wet&dry vacuum cleaner

新霸吸尘吸水机
Xin Ba Wet&Dry Vacuum Cleaner

型号 Item No	H6001	H6002	H6003
工作电压 Voltage	220-240V	220-240V	220-240V
功率 Power	1000W	1200W	1200W
真空吸力 Vacuum	1800mmH ₂ O	2000mmH ₂ O	2000mmH ₂ O
气流量 Airflow	48升/秒 48L/S	53升/秒 53L/S	53升/秒 53L/S
冷却模式 Cooling mode	循环 Recycle	循环 Recycle	循环 Recycle
高度 Height	55CM	74CM	74CM
桶身直径 Tank diameter	34.5CM	34.5CM	34.5CM
电线长度 Cable length	7.2M	7.2M	7.2M
配件 Accessory	Φ36MM	Φ36MM	Φ40MM
纸箱尺寸 Carton size	43X43X60CM	43X43X78CM	43X43X78CM
包装数量 Packing	1台/箱 1PC/CTN	1台/箱 1PC/CTN	1台/箱 1PC/CTN
颜色 Color	黄、红、蓝 Yellow, Red, Blue	黄、红、蓝 Yellow, Red, Blue	黄、红、蓝 Yellow, Red, Blue

新霸吸尘吸水机
Xin Ba Wet&Dry Vacuum Cleaner

型号 Item No	H6004	H6005
工作电压 Voltage	220-240V	220-240V
功率 Power	2000W	3000W
真空吸力 Vacuum	2000mmH ₂ O	3000mmH ₂ O
气流量 Airflow	106升/秒 106L/S	120升/秒 120L/S
冷却模式 Cooling mode	循环 Recycle	循环 Recycle
高度 Height	94CM	105CM
桶身直径 Tank diameter	44CM	44CM
电线长度 Cable length	7.2M	7.2M
纸箱尺寸 Carton size	60X54X95.5CM	60X54X107CM
包装数量 Packing	1台/箱 1PC/CTN	1台/箱 1PC/CTN
颜色 Color	黄、红、蓝 Yellow, Red, Blue	黄、红、蓝 Yellow, Red, Blue

产品性能优点

- > 不锈钢桶身，坚固耐用，不易生锈
- > 配备静音型马达，吸力强劲
- > 配件齐全，方便耐用
- > 大容量桶身，配备放水喉
- > 附加尘隔袋，易于清理及有效防止灰尘损坏机件
- > 宽大扒头设计可大大提高工作效率，令清洁工作变得轻松自在
- > 适用于大型车间、厂房、商场及各类清洁行业

SPECIFICATION

- Stainless steel tank, solid, durable and not easy to be rusty.
- Carry with low noise, powerful suction and long runtime motor.
- Carry with full set high quality standard accessories.
- Big capacity tank with a watershoot.
- The cloth filter inside let you to clean the vacuum easier and it can protect the vacuum from dust damage.
- The vacuum nozzle design makes the cleaning work become more efficient and easier.
- Use for big workshops, big factories, shopping malls and other cleaning fields.



水位开关
Water level switch

水满时自动断电停机，防止马达因进水而损坏。

To protect motor with automatic power-off device when the water is full.



H6006 70L带扒式吸尘吸水机
70L Wet&dry vacuum cleaner

H6006-1 70L带扒式吸尘吸水机(自动断电版)
70L Wet&dry vacuum cleaner(automatic power-off)



水位开关
Water level switch

水满时自动断电停机，防止马达因进水而损坏。

To protect motor with automatic power-off device when the water is full.



H6007 80L带扒式吸尘吸水机
80L Wet&dry vacuum cleaner

H6007-1 80L带扒式吸尘吸水机(自动断电版)
80L Wet&dry vacuum cleaner(automatic power-off)

产品性能优点

- > 半透明塑料桶身，防酸防碱，永不腐蚀，耐碰撞
- > 配备静音型马达，吸力强劲
- > 配件齐全，方便耐用
- > 大容量桶身，配备放水喉
- > 附加尘隔袋，易于清理及有效防止灰尘损坏机件
- > 宽大扒头设计可大大提高工作效率，令清洁工作变得轻松自在
- > 适用于大型车间、厂房、商场及各类清洁行业

SPECIFICATION

- The semitransparent plastic tank, acidproof and anti-alkalis, and collision resistance.
- Carry with low noise, powerful suction and long runtime motor.
- Carry with full set high quality standard accessories.
- Big capacity tank with a watershoot.
- The cloth filter inside let you to clean the vacuum easier and it can protect the vacuum from dust damage.
- The vacuum nozzle design makes the cleaning work become more efficient and easier.
- Use for big workshops, big factories, shopping malls and other cleaning fields.

新霸吸尘吸水机

Xin Ba Wet&Dry Vacuum Cleaner

型号 Item No	H6015	H6016
工作电压 Voltage	220-240V	220-240V
功率 Power	2000W	3000W
真空吸力 Vacuum	2000mmH ₂ O	3000mmH ₂ O
气流量 Airflow	106升/秒 106L/S	120升/秒 120L/S
冷却模式 Cooling mode	循环 Recycle	循环 Recycle
高度 Height	92CM	92CM
电线长度 Cable length	7.2M	7.2M
纸箱尺寸 Carton size	62X52X95.5CM	62X52X95.5CM
包装数量 Packing	1台/箱 1PC/CTN	1台/箱 1PC/CTN
颜色 Color	黄、红、蓝 Yellow, Red, Blue	黄、红、蓝 Yellow, Red, Blue



H6015 90L双马达吸尘吸水机
90L 2 motor Wet&dry vacuum cleaner



H6016 90L三马达吸尘吸水机
90L 3 motor Wet&dry vacuum cleaner

产品性能优点

- > 不锈钢桶身，坚固耐用，不易生锈
- > 配备静音型马达，吸力强劲
- > 配件齐全，方便耐用
- > 附加尘隔袋，易于清理及有效防止灰尘损坏机件
- > 四轮底盘机架，外形美观，轻巧灵活
- > 适用于酒店宾馆、小型工厂及各类清洁行业



H6021 15L吸尘吸水机
15L Wet&dry vacuum cleaner



H6022 30L吸尘吸水机
30L Wet&dry vacuum cleaner



H6023 30L吸尘吸水机
30L Wet&dry vacuum cleaner

SPECIFICATION

- Stainless steel tank,solid,durable and not easy to be rusty.
- Carry with low noise,powerful suction and long runtime motor.
- Carry with full set high quality standard accessories.
- The cloth filter inside let you to clean the vaccum easier and it can protect the vacuum from dust damage.
- The four-wheel base make the movement flexible.
- Use for restaurants,hotels, small factories and other cleaning fields.

新宝吸尘吸水机

Xin Bao Wet&Dry Vacuum Cleaner

型号 Item No	H6021	H6022	H6023
工作电压 Voltage	220-240V	220-240V	220-240V
功率 Power	1000W	1200W	1200W
真空吸力 Vacuum	1800mmH ₂ O	2000mmH ₂ O	2000mmH ₂ O
气流量 Airflow	48升/秒 48L/S	53升/秒 53L/S	53升/秒 53L/S
冷却模式 Cooling mode	循环 Recycle	循环 Recycle	循环 Recycle
高度 Height	55CM	75CM	75CM
桶身直径 Tank diameter	34.5CM	34.5CM	34.5CM
电线长度 Cable length	7.2M	7.2M	7.2M
配件 Accessory	Φ36MM	Φ36MM	Φ40MM
纸箱尺寸 Carton size	43X43X60CM	43X43X78CM	43X43X78CM
包装数量 Packing	1台/箱 1PC/CTN	1台/箱 1PC/CTN	1台/箱 1PC/CTN
颜色 Color	黄、红、蓝 Yellow, Red, Blue	黄、红、蓝 Yellow, Red, Blue	黄、红、蓝 Yellow, Red, Blue

产品性能优点

- > 不锈钢桶身，坚固耐用，不易生锈
- > 配备静音型马达，吸力强劲
- > 配件齐全，方便耐用
- > 大容量桶身，配备放水喉
- > 附加尘隔袋，易于清理及有效防止灰尘损坏机件
- > 宽大轮盘及车架，外形美观，灵活稳定
- > 适用于大型车间、厂房、商场及各类清洁行业

SPECIFICATION

- Stainless steel tank,solid,durable and not easy to be rusty.
- Carry with low noise,powerful suction and long runtime motors.
- Carry with full set high quality standard accessories.
- Big capacity tank with a watershoot.
- The cloth filter inside let you to clean the vaccum easier and it can protect the vacuum from dust damage.
- The big four-wheel base trolley make the movement flexible.
- Use for big workshops,big factories,shopping malls and other cleaning fields.

新宝吸尘吸水机

Xin Bao Wet&Dry Vacuum Cleaner

型号 Item No	H6024	H6025
工作电压 Voltage	220-240V	220-240V
功率 Power	2000W	3000W
真空吸力 Vacuum	2000mmH ₂ O	3000mmH ₂ O
气流量 Airflow	106升/秒 106L/S	120升/秒 120L/S
冷却模式 Cooling mode	循环 Recycle	循环 Recycle
高度 Height	98CM	108CM
桶身直径 Tank diameter	44CM	44CM
电线长度 Cable length	7.2M	7.2M
纸箱尺寸 Carton size	60X54X102.5CM	60X54X113CM
包装数量 Packing	1台/箱 1PC/CTN	1台/箱 1PC/CTN
颜色 Color	黄、红、蓝 Yellow, Red, Blue	黄、红、蓝 Yellow, Red, Blue



H6024 70L吸尘吸水机
70L Wet&dry vacuum cleaner



H6025 80L三马达吸尘吸水机
80L 3 motor Wet&dry vacuum cleaner

产品性能优点

- > 不锈钢桶身，坚固耐用，不易生锈
- > 配备静音型马达，吸力强劲
- > 配件齐全，方便耐用
- > 大容量桶身，配备放水喉
- > 附加尘隔袋，易于清理及有效防止灰尘损坏机件
- > 宽大扒头设计可大大提高工作效率，令清洁工作变得轻松自在
- > 适用于大型车间、厂房、商场及各类清洁行业

SPECIFICATION

- Stainless steel tank, solid, durable and not easy to be rusty.
- Carry with low noise, powerful suction and long runtime motor.
- Carry with full set high quality standard accessories.
- Big capacity tank with a watershoot.
- The cloth filter inside let you to clean the vacuum easier and it can protect the vacuum from dust damage.
- The vacuum nozzle design makes the cleaning work become more efficient and easier.
- Use for big workshops, big factories, shopping malls and other cleaning fields.



水位开关
Water level switch

水满时自动断电停机，防止马达因进水而损坏。

To protect motor with automatic power-off device when the water is full.



H6026 70L带扒式吸尘吸水机
70L Wet&dry vacuum cleaner

H6026-1 70L带扒式吸尘吸水机(自动断电版)
70L Wet&dry vacuum cleaner(automatic power-off)

新宝吸尘吸水机
Xin Bao Wet&Dry Vacuum Cleaner

型号 Item No	H6026 H6026-1	H6027 H6027-1
工作电压 Voltage	220-240V	220-240V
功率 Power	2000W	3000W
真空吸力 Vacuum	2000mmH ₂ O	3000mmH ₂ O
气流量 Airflow	106升/秒 106L/S	120升/秒 120L/S
冷却模式 Cooling mode	循环 Recycle	循环 Recycle
高度 Height	101CM	111CM
桶身直径 Tank diameter	44CM	44CM
电线长度 Cable length	7.2M	7.2M
纸箱尺寸 Carton size	77X58X107CM	77X58X117CM
包装数量 Packing	1台/箱 1PC/CTN	1台/箱 1PC/CTN
颜色 Color	黄、红、蓝 Yellow, Red, Blue	黄、红、蓝 Yellow, Red, Blue



水位开关
Water level switch

水满时自动断电停机，防止马达因进水而损坏。

To protect motor with automatic power-off device when the water is full.



H6027 80L带扒式吸尘吸水机
80L Wet&dry vacuum cleaner

H6027-1 80L带扒式吸尘吸水机(自动断电版)
80L Wet&dry vacuum cleaner(automatic power-off)

产品性能优点

- > 半透明塑料桶身，防酸防碱，永不腐蚀，耐碰撞。
- > 配备静音型马达，吸力强劲
- > 配件齐全，方便耐用
- > 大容量桶身，配备放水喉
- > 附加尘隔袋，易于清理及有效防止灰尘损坏机件
- > 宽大扒头设计可大大提高工作效率，令清洁工作变得轻松自在
- > 适用于大型车间、厂房、商场及各类清洁行业

SPECIFICATION

- The semitransparent plastic tank, acidproof and anti-alkalis, and collision resistance.
- Carry with low noise, powerful suction and long runtime motor.
- Carry with full set high quality standard accessories.
- Big capacity tank with a watershoot.
- The cloth filter inside let you to clean the vacuum easier and it can protect the vacuum from dust damage.
- The vacuum nozzle design makes the cleaning work become more efficient and easier.
- Use for big workshops, big factories, shopping malls and other cleaning fields.

新宝吸尘吸水机
Xin Bao Wet&Dry Vacuum Cleaner

型号 Item No	H6035	H6036
工作电压 Voltage	220-240V	220-240V
功率 Power	2000W	3000W
真空吸力 Vacuum	2000mmH ₂ O	3000mmH ₂ O
气流量 Airflow	106升/秒 106L/S	120升/秒 120L/S
冷却模式 Cooling mode	循环 Recycle	循环 Recycle
高度 Height	95CM	95CM
电线长度 Cable length	7.2M	7.2M
纸箱尺寸 Carton size	62X52X102CM	62X52X102CM
包装数量 Packing	1台/箱 1PC/CTN	1台/箱 1PC/CTN
颜色 Color	黄、红、蓝 Yellow, Red, Blue	黄、红、蓝 Yellow, Red, Blue



H6035 90L双马达吸尘吸水机
90L 2 motor Wet&dry vacuum cleaner



H6036 90L三马达吸尘吸水机
90L 3 motor Wet&dry vacuum cleaner

产品性能优点

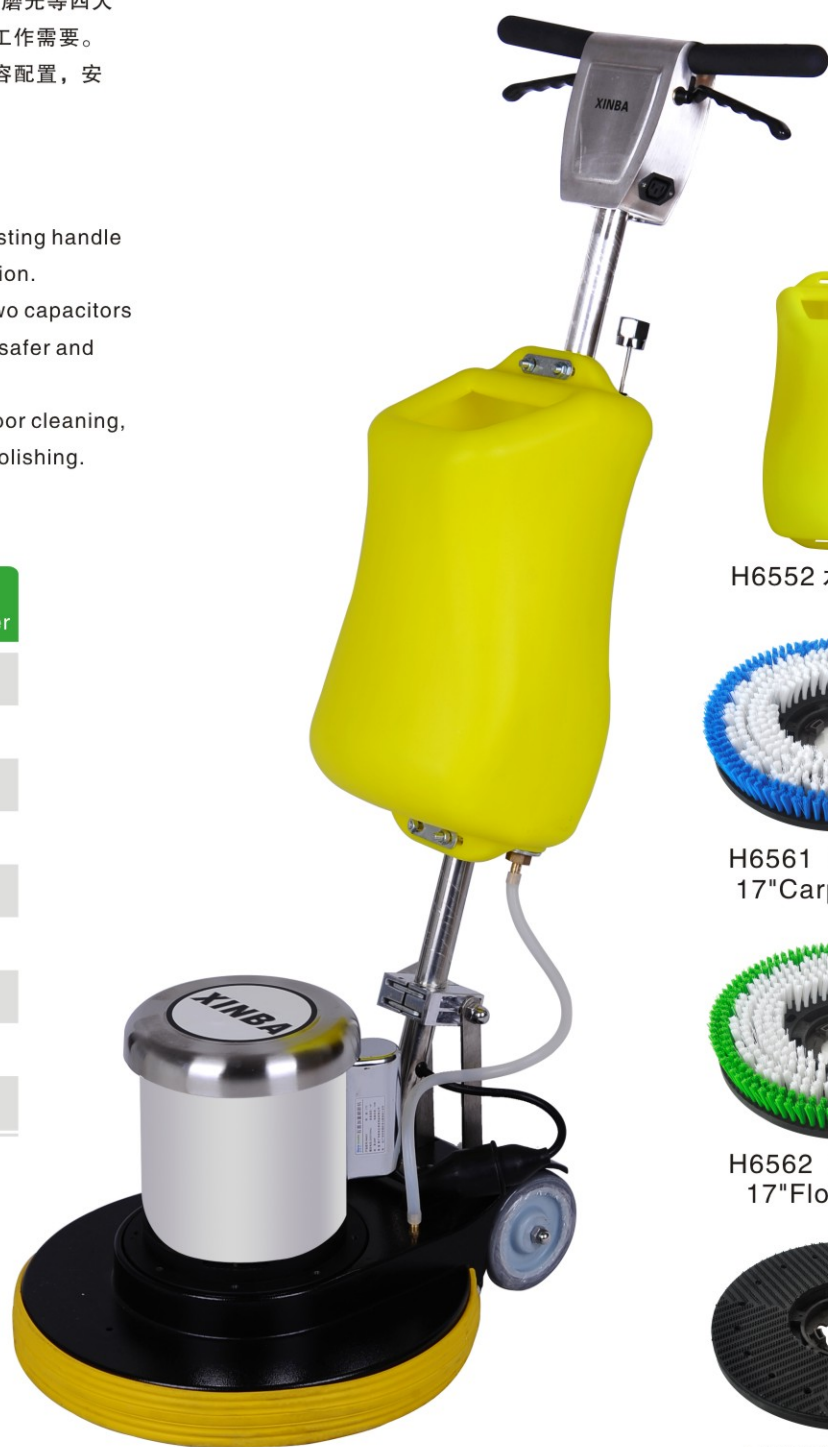
- > 多功能刷地机手控式设计，操作灵活简便，具有洗地、洗地毯、起蜡、低速磨光等四大功能，同时满足客户四种不同的工作需要。
- > 刷机设计精密，齿轮传动，双电容配置，安全可靠，运行有力。

SPECIFICATION

- It's multifunctional manual adjusting handle allows a handy and easy operation. Designed with a gear box and two capacitors motor which make the machine safer and more powerful.
- It can use for carpet cleaning, floor cleaning, wax removing and low-speed polishing.

新霸多功能刷地机
Xin Ba Multifunctional Burnisher

型号 Item No	H6501
工作电压 Voltage	220-240V
功率 Power	1500W
转速 RPM	175
底盘直径 Base diameter	17"
重量 Weight	50KGS
电线长度 Cable length	12M
包装数量 Packing	4台/箱 4CTN/SET
颜色 Color	黄、蓝 Yellow、Blue



H6501 多功能刷地机
Multifunctional Burnisher



H6552 水箱 Tank



H6561 17"地毯刷
17"Carpet brush



H6562 17"洗地刷
17"Floor brush



H6563 17"针座
17"Pad holder

产品性能优点

- > 多功能刷地机手控式设计，操作灵活简便，具有洗地、洗地毯、起蜡、低速磨光等四大功能，同时满足客户四种不同的工作需要。
- > 刷机设计精密，齿轮传动，双电容配置，安全可靠，运行有力。

SPECIFICATION

- It's multifunctional manual adjusting handle allows a handy and easy operation. Designed with a gear box and two capacitors motor which make the machine safer and more powerful.
- It can use for carpet cleaning, floor cleaning, wax removing and low-speed polishing.

新霸多功能刷地机
Xin Ba Multifunctional Burnisher

型号 Item No	H6502	H6503
工作电压 Voltage	220-240V	220-240V
功率 Power	1500W	1500W
转速 RPM	175	175
底盘直径 Base diameter	17"	17"
重量 Weight	37.6KGS	37.9KGS
电线长度 Cable length	12M	12M
包装数量 Packing	4台/箱 4CTN/SET	4台/箱 4CTN/SET
颜色 Color	蓝 Blue	蓝 Blue



H6502 多功能刷地机
Multifunctional Burnisher



H6552 水箱 Tank



H6561 17"地毯刷
17"Carpet brush



H6562 17"洗地刷
17"Floor brush



H6563 17"针座
17"Pad holder



H6503 多功能刷地机
Multifunctional Burnisher

产品性能优点

- > 多功能刷地机手控式设计，操作灵活简便，具有洗地、洗地毯、起蜡、低速磨光等四大功能，同时满足客户四种不同的工作需要。
- > 刷机设计精密，齿轮传动，双电容配置，安全可靠，运行有力。

SPECIFICATION

- It's multifunctional manual adjusting handle allows a handy and easy operation. Designed with a gear box and two capacitors motor which make the machine safer and more powerful.
- It can use for carpet cleaning, floor cleaning, wax removing and low-speed polishing.



H6507 多功能刷地机
Multifunctional Burnisher



H6552 水箱 Tank



H6564 17"地毯刷(154)
17"Carpet brush



H6565 17"洗地刷(154)
17"Floor brush



H6566 17"针座(154)
17"Pad holder



H6508 多功能刷地机
Multifunctional Burnisher

产品性能优点

- > 特大功率电机，齿轮传动，双电容配置，安全可靠，运行有力。特制全不锈钢蝴蝶型手柄，加厚铝合金翻新盘，可拆卸加重铁，操作灵活方便。集洗地、洗地毯、起蜡、低速抛光、翻新、晶面处理等功能于一身，功能齐全。

SPECIFICATION

- Designed with a gear box and two capacitors motor which make the machine safer and more powerful. Equipped with an adjusting stainless steel handle, aluminum base and detachable heavy iron, these allows a handy and easy operation. A multifunctional machine, it can be used for carpet cleaning, floor cleaning, wax removing, low-speed polishing, floor renewing, crystallizing, etc.

新霸石面加重翻新机
Xin Ba Floor Renewing Machine

型号 Item No	H6601	H6602	H6603
工作电压 Voltage	220-240V	220-240V	220-240V
功率 Power	2HP	2.5HP	2HP
转速 RPM	175	175	175
底盘直径 Base diameter	18"	18"	18"
重量 Weight	81.3KGS	81.3KGS	86.5KGS
电线长度 Cable length	12M	12M	12M
包装数量 Packing	5台/箱 5CTN/SET	5台/箱 5CTN/SET	5台/箱 5CTN/SET
颜色 Color	蓝、黄 Blue, Yellow	蓝、黄 Blue, Yellow	蓝、黄 Blue, Yellow



H6601 石面加重翻新机
Floor renewing machine

H6602 石面加重翻新机
Floor renewing machine

H6603 石面加重翻新机(进口电机)
Floor renewing machine

- 1.采用防滑轨道，使用更牢固，更安全。
- 2.专利设计，防冒必究。

1. Use antiskid track, much stronger and safer.
2. Patent design, all rights reserved



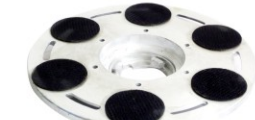
升级



H6552 水箱 Tank



H6661 加重铁
Heavy iron



H6582 18"翻新铝盘
18"Aluminum plate



H6572 18"针座
18"Pad holder

产品性能优点

- > 特大功率电机， 齿轮传动， 双电容配置， 安全可靠， 运行有力。特制全不锈钢蝴蝶型手柄， 加厚铝合金翻新盘， 可拆卸加重铁， 操作灵活方便。集洗地、 洗地毯、 起蜡、 低速抛光、 翻新、 晶面处理等功能于一身， 功能齐全。

SPECIFICATION

- Designed with a gear box and two capacitors motor which make the machine safer and more powerful. Equipped with an adjusting stainless steel handle, aluminum base and detachable heavy iron, these allows a handy and easy operation. A multifunctional machine, it can be used for carpet cleaning, floor cleaning, wax removing, low-speed polishing, floor renewing, crystallizing, etc.

新霸石面加重翻新机
Xin Ba Floor Renewing Machine

型号 Item No	H6605	H6606
工作电压 Voltage	220-240V	220-240V
功率 Power	2.5HP	2.0HP
转速 RPM	175	175
底盘直径 Base diameter	18"	18"
重量 Weight	76KGS	86.5KGS
电线长度 Cable length	12M	12M
包装数量 Packing	5台/箱 5CTN/SET	5台/箱 5CTN/SET
颜色 Color	黄 Yellow	黄 Yellow



- 1.采用防滑轨道，使用更牢固，更安全。
 - 2.专利设计，防冒必究。
- 1.Use antiskid track,much stronger and safer.
 - 2.Patent design,all rights reserved



H6552 水箱 Tank

H6605 石面加重翻新机
Floor renewing machine

H6606 石面加重翻新机(进口电机)
Floor renewing machine



H6661 加重铁
Heavy iron



H6582 18"翻新铝盘
18"Aluminum plate



H6572 18"针座
18"Pad holder

产品性能优点

- > 双水箱设计，运行时间长。
- > 机身小巧，易搬运，操作简单。
- > 喷洒抽吸一体，清洗的同时吸走污水，效果好效率高。
- > 适用范围广，可用于清洗布艺沙发，地毯，床垫，布艺座椅，布艺窗帘等。

SPECIFICATION

- Dual tank design makes a long time operation.
- Small fuselage, easy to carry and operate.
- Spraying and sucking in the same time, the dirty water is sucked while cleaning,this makes a good effect and high efficiency.
- Wide application, can be used to clean fabric sofa, carpet, mattress, fabric chair, fabric curtains,etc.

沙发地毯抽洗机
Sofa carpet cleaner

型号 Item No	H7201
额定电压 Voltage	220V~/50Hz
功率 Power	1000W
清水箱容量 Clean water tank capacity	7.5L
污水箱容量 Dirty water tank capacity	10L
软管长度 Hose length	2.5M
电线长度 Cable length	10M
产品尺寸 Product size	53X40X51.5CM
纸箱尺寸 Carton size	56X42X62CM
包装数量 Packing	1台/箱 1CTN/PC
颜色 Color	绿、蓝 Green、Blue



H7201 沙发地毯抽洗机
Sofa carpet cleaner



H8961 软管
H8961 Suction hose&Spray hose



H8962 喷抽扒头
H8962 Sprayer & sucker

产品性能优点

- 外形设计轻巧美观。
- 马达网罩，可防止马达吸入杂物。
- 大鼓风涡轮，产生更大空气流量，有效提高工作效率。
- 聚乙烯外壳，保护机内元件，安全可靠，经久耐用。
- 三速开关，可任意调节空气流量，操作灵活。
- 风力强劲，噪音低，适用于宾馆酒店、工厂、仓库等各类潮湿场地。
- H6803有冷风和热风两种模式，大功率加热管，发热快。

SPECIFICATION

- Safety cover for motor can prevent sucking any sundries.
- Super fan-turbo-motor can produce strong airflow to improve the work efficiency.
- Polythene outer shell can protect the inner components and make the machine safe and durable.
- The three speed regulation can make you regulate the airflow optionally.
- Strong airflow and low noise make it suitable for hotels, large workshops, warehouses, marketplaces and other wet place.
- H6803 there are modes of cold and hot air, High power heating tube for fast heating.



H6801 吹风机
Blower



H6802 吹风机
Blower



H6803 冷/热吹风机
Cold/hot air blower



H6804 吹风机
Blower

产品性能优点

- 外形设计轻巧美观。
- 马达网罩，可防止马达吸入杂物。
- 大鼓风涡轮，产生更大空气流量，有效提高工作效率。
- 聚乙烯外壳，保护机内元件，安全可靠，经久耐用。
- 三速开关，可任意调节空气流量，操作灵活。
- 风力强劲，噪音低，适用于宾馆酒店、工厂、仓库等各类潮湿场地。

SPECIFICATION

- Safety cover for motor can prevent sucking any sundries.
- Super fan-turbo-motor can produce strong airflow to improve the work efficiency.
- Polythene outer shell can protect the inner components and make the machine safe and durable.
- The three speed regulation can make you regulate the airflow optionally.
- Strong airflow and low noise make it suitable for hotels, large workshops, warehouses, marketplaces and other wet place.



H6807 吹风机
Blower



H6805 吹风机
Blower



H6806 吹风机
Blower

新霸吹风机 Xin Ba Blower

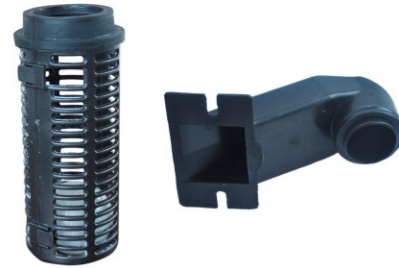
型号 Item No	工作电压 Voltage	功率 Power	热风功率 Hot Power	转速 RPM	电线长度 Cable length	纸箱尺寸 Carton size	包装数量 Packing	颜色 Color
H6801	220-240V	950W	~	高、中、低 H、M、L	6M	45X43.5X52CM	1台/箱 1PC/CTN	灰、红、蓝 Gray, Red, Blue
H6802	220-240V	950W	~	高、中、低 H、M、L	6M	45X43.5X52CM	1台/箱 1PC/CTN	灰、红、蓝 Gray, Red, Blue
H6803	220-240V	950W	2000W	高、中、低 H、M、L	6M	45X43.5X52CM	1台/箱 1PC/CTN	灰、红、蓝 Gray, Red, Blue
H6804	220-240V	950W	~	高、中、低 H、M、L	6M	45X43.5X52CM	1台/箱 1PC/CTN	灰、红、蓝 Gray, Red, Blue

新霸吹风机 Xin Ba Blower

型号 Item No	工作电压 Voltage	功率 Power	热风功率 Hot Power	转速 RPM	电线长度 Cable length	纸箱尺寸 Carton size	包装数量 Packing	颜色 Color
H6805	220-240V	150W	~	高、中、低 H、M、L	4.5M	33X31X29CM	1台/箱 1PC/CTN	蓝 Blue
H6806	220-240V	150W	~	高、中、低 H、M、L	4.5M	33X31X29CM	1台/箱 1PC/CTN	蓝 Blue
H6807	220-240V	950W	~	高、中、低 H、M、L	6M	48.5X43.2X52.5CM	1台/箱 1PC/CTN	绿/蓝 Green/Blue



H8907 过滤器
Filter



H8908 洗地机浮球笼
Float cage

H8909 浮球笼支架
Float cage holder



H6361 吸尘吸水马达
Wet dry motor

- 功率 Power 1000W/1200W/1500W
- 包装数量 Packing 6个/箱 6PCS/CTN



H6362 单吸尘马达
Dry motor

- 功率 Power 1000W
- 包装数量 Packing 6个/箱 6PCS/CTN



H8910 中心定位器
Scrubber positioner



H8911 刷盘驱动器
Scrubber drive device



H6363 抽洗机马达
Extractor motor

- 功率 Power 1000W/1200W/1500W
- 包装数量 Packing 6个/箱 6PCS/CTN



H6364 阿美德格马达
Ametek motor

- 功率 Power 1200W
- 包装数量 Packing 6个/箱 6PCS/CTN



H8912 挡水圈
Waterproof seal



H8913 洗地机铝盘
Scrubber aluminum plate



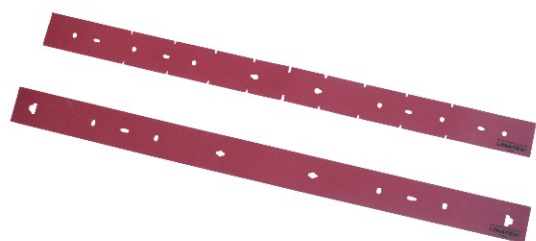
H8901 洗地机吸水马达
Suction motor of scrubber

- 功率 Power 450W/550W
- 包装数量 Packing 6个/箱 6PCS/CTN



H6365 单吸尘马达
Dry motor

- 功率 Power 1200W
- 包装数量 Packing 6个/箱 6PCS/CTN



H8906 洗地机套扒胶条
Rubber strip



H8905 洗地机吸水套扒
Suction squeegee set



H8902 洗地机刷盘马达
Brush motor of scrubber

- 功率 Power 500W
- 包装数量 Packing 2个/箱 2PCS/CTN



H8921 洗地机驱动马达
Running motor of scrubber

- 功率 Power 500W
- 包装数量 Packing 2个/箱 2PCS/CTN



H6321 小尘袋
Dust bag (S)

H6322 中尘袋
Dust bag (M)

H6323 大尘袋
Dust bag (L)

15L 吸尘吸水机配件
Accessories for 15L vacuum

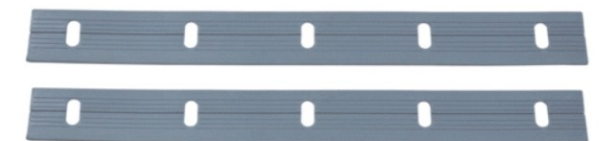
型号Item No	产品名称Product name
H6301	长接头 Long connector
H6302	2.5米软管 2.5M Suction hose
H6303	短接头 Short connector
H6304	直钢管 Metal tube
H6305	水扒 Water nozzle
H6306	尘扒 Dust nozzle
H6307	长扁咀 Flat nozzle
H6308	圆毛刷 Round brush

30L/70L/80L 吸尘吸水机配件
Accessories for 30L/70L/80L vacuum

型号Item No	产品名称Product name
H6331	长接头 Long connector
H6332	2.5米软管 2.5M Suction hose
H6333	短接头 Short connector
H6334	弯钢管 Metal tube
H6335	水扒 Water nozzle
H6336	尘扒 Dust nozzle
H6307	长扁咀 Flat nozzle
H6308	圆毛刷 Round brush



H6393 单边胶条
Single layer strip



H6394 双边胶条
Double layer strip



H6391 25米软管 (Φ36MM)
25M Suction hose (Φ36MM)

H6392 25米软管 (Φ40MM)
25M Suction hose (Φ40MM)



H6398 地毯吸水钢扒
Carpet water sucker

管径 Tube diameter: Φ 38mm



H6395 吸尘机套扒胶条
Rubber strip



H6399 吸尘吸水机后套扒
Suction Squeegee set



H6561 17"地毯刷(175)
17"Carpet brush



H6562 17"洗地刷(175)
17"Floor brush



H6570 18"地毯刷(175)
18"Carpet brush



H6571 18"洗地刷
18"Floor brush



H6563 17"针座(175)
17"Pad holder



175 背面
Back



H6572 18"针座
18"Pad holder



背面
Back



H6564 17"地毯刷(154)
17"Carpet brush



H6565 17"洗地刷(154)
17"Floor brush



H6576 20"地毯刷
20"Carpet brush



H6577 20"洗地刷
20"Floor brush



H6566 17"针座(154)
17"Pad holder



154 背面
Back



H6578 20"针座
20"Pad holder



背面
Back



H6573 18"钢丝尼龙混合刷
18"Wire nylon blending Brush



H6574 17"钢丝尼龙混合刷
17"Wire nylon blending brush



H6575 17"钢丝刷
17"Wire brush



背面
Back



H6582 18"翻新铝盘
18"Aluminum plate



背面
Back



H6591 刷扣(175)
Plate buckle



H6592 刷扣(154)
Plate buckle



H6593 翻新盘扣(175)
Plate buckle



H6594 刷扣(175)
Plate buckle



H6551 水箱
Tank



H6552 水箱
Tank



H1956 百亮抛光钢丝棉垫
Burnishing pad

- 产品规格 Specification #0,#1,#2,#3,#4
- 包装数量 Packing 20个/箱 20PCS/CTN



H1955 百亮抛光钢丝棉球
Burnishing ball

- 产品规格 Specification #0,#1,#2,#3,#4
- 包装数量 Packing 100个/箱 100PCS/CTN



H0101 24L侧压单桶榨水车
Side press single wringer trolley

- 容量 Capacity 24L
- 产品规格 Product size 52X38X81CM
- 纸箱尺寸 Carton size 47X38X39.5CM
- 包装数量 Packing 1台/箱 (1PC/CTN)
- 颜色 Color 黄色Yellow



H0102 24L下压单桶榨水车
Down press single wringer trolley

- 容量 Capacity 24L
- 产品规格 Product size 51X39X76CM
- 纸箱尺寸 Carton size 46.5X38X30.5CM
- 包装数量 Packing 1台/箱 (1PC/CTN)
- 颜色 Color 黄桶、灰榨头
Yellow bucket, Gray wringer



合资百洁垫 Floor pad

型号 Item No	尺寸 Size	包装 Packing	颜色 Color
H1952	17"	5片/箱 5PCS/CTN	红、白、黑 Red, White, Black
H1954	20"	5片/箱 5PCS/CTN	红、白、黑 Red, White, Black



H1958 石材水磨片
Wet diamond pad

- 产品规格 Specification 50#,100#,200#,300#,
500#,800#,1000#,
1500#,2000#,3000#
- 包装数量 Packing 10片/盒 10PCS/BOX



H1959 石材干磨片
Dry diamond pad

- 产品规格 Specification #0,#1,#2,#3,#4
- 包装数量 Packing 10片/盒 10PCS/BOX



H1960 混凝土专用磨片
Wet diamond Beton diamond pad

- 产品规格 Specification 50#,100#,200#,300#,
500#,800#,1000#,
1500#,2000#,3000#
- 包装数量 Packing 10片/盒 10PCS/BOX



H0103 32L侧压单桶榨水车
Side press single wringer trolley

- 容量 Capacity 32L
- 产品规格 Product size 61X39X85CM
- 纸箱尺寸 Carton size 52X40X35CM
- 包装数量 Packing 1台/箱 (1PC/CTN)
- 颜色 Color 黄色Yellow



H0104 32L下压单桶榨水车
Down press single wringer trolley

- 容量 Capacity 32L
- 产品规格 Product size 65X40X87CM
- 纸箱尺寸 Carton size 51X40X33CM
- 包装数量 Packing 1台/箱 (1PC/CTN)
- 颜色 Color 黄桶、灰榨头
Yellow bucket, Gray wringer



H0105 23L下压单桶榨水车
Down press single wringer trolley

● 容量 Capacity	23L
● 产品规格 Product size	47X36X87CM
● 纸箱尺寸 Carton size	41X31.5X42CM
● 包装数量 Packing	1台/箱 (1PC/CTN)
● 颜色 Color	蓝桶、灰榨头 Blue bucket, Gray wringer



H0110 轻便式单桶榨水车
Mini single wringer trolley

● 容量 Capacity	20L
● 产品规格 Product size	63X27X67CM
● 纸箱尺寸 Carton size	46.5X27X29CM
● 包装数量 Packing	1台/箱 (1PC/CTN)
● 颜色 Color	黄、蓝 Yellow、Blue



H0201 侧压双桶榨水车(小号)
Side press double wringer trolley(S)

● 容量 Capacity	34L
● 产品规格 Product size	81X41X93CM
● 纸箱尺寸 Carton size	76X40.5X62.5CM
● 包装数量 Packing	2台/箱 (2PCS/CTN)
● 颜色 Color	红蓝桶, 黄榨头 Red&Blue bucket, Yellow wringer



H0202 侧压双桶榨水车(大号)
Side press double wringer trolley(L)

● 容量 Capacity	46L
● 产品规格 Product size	86X41X99.5CM
● 纸箱尺寸 Carton size	76X40.5X62.5CM
● 包装数量 Packing	2台/箱 (2PCS/CTN)
● 颜色 Color	红蓝桶, 黄榨头 Red&Blue bucket, Yellow wringer



H0108 车架式榨水车 (小号)
Down press wringer trolley(S)

● 容量 Capacity	17L
● 产品规格 Product size	49X36X90.5CM
● 纸箱尺寸 Carton size	40X36X44CM
● 包装数量 Packing	1台/箱 (1PC/CTN)
● 颜色 Color	蓝桶、灰榨头 Blue bucket, Gray wringer



H0109 车架式榨水车 (大号)
Down press wringer trolley(L)

● 容量 Capacity	23L
● 产品规格 Product size	56X40X94CM
● 纸箱尺寸 Carton size	50.5X38X38CM
● 包装数量 Packing	1台/箱 (1PC/CTN)
● 颜色 Color	蓝桶、灰榨头 Blue bucket, Gray wringer



H0203 下压双桶榨水车(小号)
Down press double wringer trolley(S)

● 容量 Capacity	34L
● 产品规格 Product size	81X41X88CM
● 纸箱尺寸 Carton size	72X40.5X49CM
● 包装数量 Packing	2台/箱 (2PCS/CTN)
● 颜色 Color	红蓝桶, 灰榨头 Red&Blue bucket, Gray wringer



H0204 下压双桶榨水车(大号)
Down press double wringer trolley(L)

● 容量 Capacity	46L
● 产品规格 Product size	86X41X90CM
● 纸箱尺寸 Carton size	73X40.5X59CM
● 包装数量 Packing	2台/箱 (2PCS/CTN)
● 颜色 Color	红蓝桶, 灰榨头 Red&Blue bucket, Gray wringer



H0205 侧压双桶榨水车(小号)
Side press double wringer trolley(S)

● 容量 Capacity	34L
● 产品规格 Product size	71X43X99CM
● 纸箱尺寸 Carton size	72X44X57CM
● 包装数量 Packing	2台/箱 (2PCS/CTN)
● 颜色 Color	红蓝桶, 黄榨头 Red&Blue bucket, Yellow wringer



H0206 下压双桶榨水车(小号)
Down press double wringer trolley(S)

● 容量 Capacity	34L
● 产品规格 Product size	71X43X92CM
● 纸箱尺寸 Carton size	72X44X50CM
● 包装数量 Packing	2台/箱 (2PCS/CTN)
● 颜色 Color	红蓝桶, 黄榨头 Red&Blue bucket, Yellow wringer



H0213 下压双桶榨水车(小号)
Down press double wringer trolley(S)

● 容量 Capacity	34L
● 产品规格 Product size	81X41X88CM
● 纸箱尺寸 Carton size	68X40.5X60CM
● 包装数量 Packing	2台/箱 (2PCS/CTN)
● 颜色 Color	红蓝桶, 灰榨头 Red&Blue bucket, Gray wringer



H0214 下压双桶榨水车(大号)
Down press double wringer trolley(L)

● 容量 Capacity	46L
● 产品规格 Product size	86X41X90CM
● 纸箱尺寸 Carton size	73X40.5X59CM
● 包装数量 Packing	2台/箱 (2PCS/CTN)
● 颜色 Color	红蓝桶, 灰榨头 Red&Blue bucket, Gray wringer



H0207 侧压双桶榨水车(大号)
Side press double wringer trolley(L)

● 容量 Capacity	46L
● 产品规格 Product size	85X44X98CM
● 纸箱尺寸 Carton size	77X44X56CM
● 包装数量 Packing	2台/箱 (2PCS/CTN)
● 颜色 Color	红蓝桶, 黄榨头 Red&Blue bucket, Yellow wringer



H0208 下压双桶榨水车(大号)
Down press double wringer trolley(L)

● 容量 Capacity	46L
● 产品规格 Product size	85X44X92CM
● 纸箱尺寸 Carton size	77X44X51.5CM
● 包装数量 Packing	2台/箱 (2PCS/CTN)
● 颜色 Color	红蓝桶, 灰榨头 Red&Blue bucket, Gray wringer



H0216 下压双桶榨水车(小号)
Down press double wringer trolley(S)

● 容量 Capacity	34L
● 产品规格 Product size	71X43X92CM
● 纸箱尺寸 Carton size	74X46.5X58CM
● 包装数量 Packing	2台/箱 (2PCS/CTN)
● 颜色 Color	红蓝桶, 灰榨头 Red&Blue bucket, Gray wringer

H0218 下压双桶榨水车(大号)
Down press double wringer trolley(L)

● 容量 Capacity	46L
● 产品规格 Product size	85X44X92CM
● 纸箱尺寸 Carton size	77X46.5X58.5CM
● 包装数量 Packing	2台/箱 (2PCS/CTN)
● 颜色 Color	红蓝桶, 灰榨头 Red&Blue bucket, Gray wringer



H0209 下压双桶榨水车
Down press double wringer trolley

● 容量 Capacity	34L
● 产品规格 Product size	118.5X40X100.5CM
● 纸箱尺寸 Carton size	87X42.5X51CM
● 包装数量 Packing	2台/箱 (2PCS/CTN)
● 颜色 Color	红蓝桶, 灰榨头 Red&Blue bucket, Gray wringer



H0219 侧压双桶榨水车
Side press double wringer trolley

- 容量 Capacity 46L
- 产品规格 Product size 79X44.5X97.5CM
- 纸箱尺寸 Carton size 107.5X45X46CM
- 包装数量 Packing 2台/箱 (2PCS/CTN)
- 颜色 Color 红蓝桶, 黄榨头
Red&Blue bucket, Yellow wringer



H0220 下压双桶榨水车
Down press double wringer trolley

- 容量 Capacity 46L
- 产品规格 Product size 79X44.5X91.5CM
- 纸箱尺寸 Carton size 107.5X45X44.5CM
- 包装数量 Packing 2台/箱 (2PCS/CTN)
- 颜色 Color 红蓝桶, 灰榨头
Red&Blue bucket, Gray wringer



H0316 洗衣房布草车(小号)
Plastic laundry cart(S)

- 产品规格 Product size 117X72X80CM
- 容量 Capacity 330L
- 颜色 Color 白、蓝
White, Blue



H0317 洗衣房布草车(大号)
Plastic laundry cart(L)

- 产品规格 Product size 140X77X81CM
- 容量 Capacity 450L
- 颜色 Color 白、蓝
White, Blue



H0222 下压双桶榨水车
Down press double wringer trolley

- 容量 Capacity 46L
- 产品规格 Product size 71X38X92CM
- 纸箱尺寸 Carton size 107.5X40.5X44.5CM
- 包装数量 Packing 2台/箱 (2PCS/CTN)
- 颜色 Color 红蓝桶, 灰榨头
Red&Blue bucket, Gray wringer



H0224 下压双桶榨水车
Down press double wringer trolley

- 容量 Capacity 46L
- 产品规格 Product size 81X46X91.5CM
- 纸箱尺寸 Carton size 107.5X45X44.5CM
- 包装数量 Packing 2台/箱 (2PCS/CTN)
- 颜色 Color 红蓝桶, 灰榨头
Red&Blue bucket, Gray wringer



H0311 方形布草车
Quadrangle laundry cart

- 产品规格 Product size 94X54.5X89.5CM
- 纸箱尺寸 Carton size 96X9X58CM
- 包装数量 Packing 1台/箱 (1PC/CTN)



H0312 X形布草车
X-Shape laundry cart

- 产品规格 Product size 62X62.5X98.5CM
- 纸箱尺寸 Carton size 117X19.5X65CM
- 包装数量 Packing 1台/箱 (1PC/CTN)



H0301 多用途清洁杂物车
Janitor cart

- 产品规格 Product size 119X52X96CM
- 纸箱尺寸 Carton size 88X25X55CM
- 包装数量 Packing 1台/箱(1PC/CTN)
- 颜色 Color 蓝、灰
Blue、Gray

H0302 多用途清洁杂物车(带盖)
Janitor cart with cover

- 产品规格 Product size 119X52X96CM
- 纸箱尺寸 Carton size 88X25X55CM
- 包装数量 Packing 1台/箱(1PC/CTN)
- 颜色 Color 蓝、灰
Blue、Gray



H0305 带门清洁杂物车
Janitor cart with lockbox

- 产品规格 Product size 119X52X99CM
- 纸箱尺寸 Carton size 88X25X55CM
- 包装数量 Packing 1台/箱(1PC/CTN)
- 颜色 Color 蓝、灰
Blue、Gray



H0306 带门清洁杂物车(带盖)
Janitor cart with lockbox & cover

- 产品规格 Product size 119X52X99CM
- 纸箱尺寸 Carton size 88X25X55CM
- 包装数量 Packing 1台/箱(1PC/CTN)
- 颜色 Color 蓝、灰
Blue、Gray



H0303 多功能清洁车
Multipurpose trolley

- 产品规格 Product size 119X55X113CM
- 纸箱尺寸 Carton size 车(Cart):88X25X55CM
榨水车&桶(Wringer&buckets):55X36X48CM
- 包装数量 Packing 2箱/台(2CTNS/UNIT)
- 颜色 Color 蓝、灰
Blue、Gray



H0304 多功能清洁车(带盖)
Multipurpose trolley with cover

- 产品规格 Product size 119X55X113CM
- 纸箱尺寸 Carton size 车(Cart):88X25X55CM
榨水车&桶(Wringer&buckets):55X36X48CM
- 包装数量 Packing 2箱/台(2CTNS/UNIT)
- 颜色 Color 蓝、灰
Blue、Gray



H0471 餐盘收集车(电镀) Restaurant cart(Chromed)

H0472 餐盘收集车(不锈钢) Restaurant cart (SS)

- 产品规格 Product size 80X45X92.5CM
- 纸箱尺寸 Carton size 支架(Frames):79X6X113CM
盘/桶(Trays&buckets):55X40X37CM
- 包装数量 Packing 2箱/2台(2CTNS/2UNITS)
- 颜色 Color 灰色Gray



H0451-0453 小/中/大号不锈钢餐车
Stainless steel restaurant cart(S/M/L)

- 产品规格 Product size S 76.5X40X89CM
M 86.5X45X89.5CM
L 96.5X50X89.5CM
- 纸箱尺寸 Carton size S 77X42X16CM
M 82X46X17CM
L 91.5X51.5X16CM
- 包装数量 Packing 1台/箱(1PC/CTN)



H0401 多用途三层餐车(小号)
Utility cart(S)

- 产品规格 Product size 84.5X43X95CM
- 纸箱尺寸 Carton size 76X44X22CM
- 包装数量 Packing 1台/箱(1PC/CTN)
- 颜色 Color 灰色Gray



H0402 多用途三层餐车(小号)
Utility cart with buckets(S)

- 产品规格 Product size 109X43X95CM
- 纸箱尺寸 Carton size 车(Cart):76X44X22CM
桶(Buckets):38.5X25X54.5CM1
- 包装数量 Packing 2箱/台(2CTNS/UNIT)
- 颜色 Color 灰色Gray



H0405 圆管三层餐车(小号)
Round tube utility cart(S)

- 产品规格 Product size 86X42X93CM
- 纸箱尺寸 Carton size 76X42.5X24.5CM
- 包装数量 Packing 1台/箱(1PC/CTN)
- 颜色 Color 灰色Gray



H0406 圆管三层餐车带桶(小号)
Round tube utility cart with buckets(S)

- 产品规格 Product size 105X42X93CM
- 纸箱尺寸 Carton size 车(Cart):76X42.5X24.5CM
桶(Buckets):38.5X25X54.5CM
- 包装数量 Packing 2箱/套(2CTNS/UNIT)
- 颜色 Color 灰色Gray



H0403 多用途三层餐车(大号)
Utility cart(L)

- 产品规格 Product size 102X50X96CM
- 纸箱尺寸 Carton size 94X51.5X22.5CM
- 包装数量 Packing 1台/箱(1PC/CTN)
- 颜色 Color 灰色Gray



H0404 多用途三层餐车带桶(大号)
Utility cart with buckets(L)

- 产品规格 Product size 128X50X96CM
- 纸箱尺寸 Carton size 车(Cart):94X51.5X22.5CM
桶(Buckets):38.5X25X54.5CM1
- 包装数量 Packing 2箱/台(2CTNS/UNIT)
- 颜色 Color 灰色Gray



H0407 圆管三层餐车(大号)
Round tube utility cart(L)

- 产品规格 Product size 107X50X99CM
- 纸箱尺寸 Carton size 91X55X24.5CM
- 包装数量 Packing 1台/箱(1PC/CTN)
- 颜色 Color 灰色Gray



H0408 圆管三层餐车带桶(大号)
Round tube utility cart with buckets(L)

- 产品规格 Product size 127X50X99CM
- 纸箱尺寸 Carton size 车(Cart):91X55X24.5CM
桶(Buckets):38.5X25X54.5CM
- 包装数量 Packing 2箱/套(2CTNS/UNIT)
- 颜色 Color 灰色Gray



H0410 带挡板三层餐车
Utility cart

● 产品规格 Product size	102X50X96CM
● 纸箱尺寸 Carton size	94X51.5X22.5CM
● 包装数量 Packing	1台/箱(1PC/CTN)
● 颜色 Color	灰色 Gray



H0415 多用途两层餐车(大号)
Utility cart(L)

● 产品规格 Product size	102X50X96CM
● 纸箱尺寸 Carton size	94X51.5X13CM
● 包装数量 Packing	1台/箱(1PC/CTN)
● 颜色 Color	灰色 Gray



H0491 小号餐车收集桶
Collecting bucket(S)

● 产品规格 Product size	33.5X23.3X17.7CM
● 纸箱尺寸 Carton size	44X35X79CM
● 包装数量 Packing	10个/箱(10PCS/CTN)
● 颜色 Color	黑色 Black



H0492 大号餐车收集桶
Collecting bucket(L)

● 产品规格 Product size	38X23.5X53CM
● 纸箱尺寸 Carton size	48X40X92CM
● 包装数量 Packing	10个/箱(10PCS/CTN)
● 颜色 Color	黑色 Black



H0503 方形普通垃圾桶
Squareness ordinary dustbin

H0504 方形阻燃垃圾桶
Squareness fireproof dustbin

● 容量 Capacity	8L
● 产品规格 Product size	24X16.8X26.5CM
● 纸箱尺寸 Carton size	49X34X54.5CM
● 包装数量 Packing	40个/箱(40PCS/CTN)
● 颜色 Color	黑、灰、米黄 Black、Gray、Beige



H0505 方形普通垃圾桶
Squareness ordinary dustbin

H0506 方形阻燃垃圾桶
Squareness fireproof dustbin

● 容量 Capacity	14L
● 产品规格 Product size	27.5X21X31.5CM
● 纸箱尺寸 Carton size	41X28.5X75.5CM
● 包装数量 Packing	20个/箱(20PCS/CTN)
● 颜色 Color	黑、灰、米黄 Black、Gray、Beige



H0515 方形反边普通垃圾桶
Squareness ordinary dustbin

H0516 方形反边阻燃垃圾桶
Squareness fireproof dustbin

● 容量 Capacity	8L
● 产品规格 Product size	25X18X26.3CM
● 纸箱尺寸 Carton size	37X26.5X68CM
● 包装数量 Packing	20个/箱(20PCS/CTN)
● 颜色 Color	黑、灰、米黄 Black、Gray、Beige



H0517 方形反边普通垃圾桶
Squareness ordinary dustbin

H0518 方形反边阻燃垃圾桶
Squareness fireproof dustbin

● 容量 Capacity	14L
● 产品规格 Product size	29X20.8X31.3CM
● 纸箱尺寸 Carton size	43.5X30.5X74CM
● 包装数量 Packing	20个/箱(20PCS/CTN)
● 颜色 Color	黑、灰、米黄 Black、Gray、Beige



H0507 圆形普通垃圾桶
Round ordinary dustbin

H0508 圆形阻燃垃圾桶
Round fireproof dustbin

● 容量 Capacity	8L
● 产品规格 Product size	∅ 21X30CM
● 纸箱尺寸 Carton size	44X22X78CM
● 包装数量 Packing	20个/箱(20PCS/CTN)
● 颜色 Color	黑、灰、米黄 Black、Gray、Beige



H0509 方形普通垃圾桶
Squareness ordinary dustbin

H0510 方形阻燃垃圾桶
Squareness fireproof dustbin

● 容量 Capacity	8L
● 产品规格 Product size	23.5X16X29CM
● 纸箱尺寸 Carton size	48X32.5X78CM
● 包装数量 Packing	40个/箱(40PCS/CTN)
● 颜色 Color	黑、灰、米黄 Black、Gray、Beige



H0501 圆形普通垃圾桶
Round ordinary dustbin

H0502 圆形阻燃垃圾桶
Round fireproof dustbin

● 容量 Capacity	10L
● 产品规格 Product size	∅ 24X26CM
● 纸箱尺寸 Carton size	49X25X68CM
● 包装数量 Packing	20个/箱(20PCS/CTN)
● 颜色 Color	黑色 Black



H0521 圆形普通垃圾桶
Stainless steel ring ordinary dustbin

H0522 圆形阻燃垃圾桶
Stainless steel ring fireproof dustbin

● 容量 Capacity	10L
● 产品规格 Product size	∅ 24X26CM
● 纸箱尺寸 Carton size	49X25X68CM
● 包装数量 Packing	20个/箱(20PCS/CTN)
● 颜色 Color	黑色 Black



H0511 椭圆普通垃圾桶
Oval ordinary dustbin

H0512 椭圆阻燃垃圾桶
Oval fireproof dustbin

● 容量 Capacity	8L
● 产品规格 Product size	27X19X26CM
● 纸箱尺寸 Carton size	40.5X28.5X83CM
● 包装数量 Packing	20个/箱(20PCS/CTN)
● 颜色 Color	黑、灰、米黄 Black、Gray、Beige



H0513 椭圆普通垃圾桶
Oval ordinary dustbin

H0514 椭圆阻燃垃圾桶
Oval fireproof dustbin

● 容量 Capacity	10L
● 产品规格 Product size	27X20X32.2CM
● 纸箱尺寸 Carton size	40.5X28X98.5CM
● 包装数量 Packing	20个/箱(20PCS/CTN)
● 颜色 Color	黑、灰、米黄 Black、Gray、Beige



H0525 圆形普通垃圾桶
Round ordinary dustbin

H0526 圆形阻燃垃圾桶
Round fireproof dustbin

● 容量 Capacity	10L
● 产品规格 Product size	∅ 22.5X26CM
● 纸箱尺寸 Carton size	70.5X47X54CM
● 包装数量 Packing	12个/箱(12PCS/CTN)
● 颜色 Color	黑色 Black



H0527 圆形普通垃圾桶
Round ordinary dustbin

H0528 圆形阻燃垃圾桶
Round fireproof dustbin

● 容量 Capacity	10L
● 产品规格 Product size	∅ 22.5X26CM
● 纸箱尺寸 Carton size	70.5X47X54CM
● 包装数量 Packing	12个/箱(12PCS/CTN)
● 颜色 Color	黑色 Black



塑料内胆 塑料外壳
Plastic inner layer Plastic outside layer

H0529 圆形双层普通垃圾桶
Round ordinary dustbin

H0530 圆形双层阻燃垃圾桶
Round fireproof dustbin

- 容量 Capacity 10L
- 产品规格 Product size \varnothing 22.5X26.5CM
- 纸箱尺寸 Carton size 70.5X47X56CM
- 包装数量 Packing 12个/箱(12PCS/CTN)
- 颜色 Color 黑色 Black



塑料内胆 铁烤漆外壳
Plastic inner layer Metal outside layer

H0531 圆形双层垃圾桶
Round ordinary dustbin

- 容量 Capacity 10L
- 产品规格 Product size \varnothing 22.5X26.5CM
- 纸箱尺寸 Carton size 70.5X47X56CM
- 包装数量 Packing 12个/箱(12PCS/CTN)
- 颜色 Color 黑色 Black



H0533 圆形双层垃圾桶
Round ordinary dustbin

- 容量 Capacity 10L
- 产品规格 Product size \varnothing 22.5X26.5CM
- 纸箱尺寸 Carton size 70.5X47X56CM
- 包装数量 Packing 12个/箱(12PCS/CTN)
- 颜色 Color 黑色 Black



双层效果图
Two layer effect picture

塑料内胆 不锈钢外壳
Plastic inner layer Stainless steel outside layer



H0539 圆形单层铁烤漆垃圾桶
Round metal dustbin

- 容量 Capacity 10L
- 产品规格 Product size \varnothing 22.5X26.5CM
- 纸箱尺寸 Carton size 69X45X52CM
- 包装数量 Packing 12个/箱(12PCS/CTN)
- 颜色 Color 黑色 Black



铁烤漆内胆 铁烤漆外壳
Metal inner layer Metal outside layer

H0540 圆形双层烤漆垃圾桶
Round double layer metal dustbin

- 容量 Capacity 10L
- 产品规格 Product size \varnothing 22.5X26.5CM
- 纸箱尺寸 Carton size 45.5X45.5X52CM
- 包装数量 Packing 12个/箱(12PCS/CTN)
- 颜色 Color 黑色 Black



内桶(Bucket inside)

H0551 不锈钢方形垃圾桶
Stainless steel squareness dustbin

- 容量 Capacity 6L
- 产品规格 Product size 24.8X20X31.8CM
- 纸箱尺寸 Carton size 28.3X28.3X35.6CM
- 包装数量 Packing 1个/箱(1PC/CTN)
- 颜色 Color 银色 Silver



内桶(Bucket inside)

H0552 不锈钢方形垃圾桶
Stainless steel squareness dustbin

- 容量 Capacity 8L
- 产品规格 Product size 24.8X20X37.8CM
- 纸箱尺寸 Carton size 28.3X28.3X41.6CM
- 包装数量 Packing 1个/箱(1PC/CTN)
- 颜色 Color 银色 Silver



内桶(Bucket inside)

H0553 不锈钢方形垃圾桶
Stainless steel squareness dustbin

● 容量 Capacity	10L
● 产品规格 Product size	24.8X20X43.8CM
● 纸箱尺寸 Carton size	28.3X28.3X47.6CM
● 包装数量 Packing	1个/箱(1PC/CTN)
● 颜色 Color	银色 Silver



内桶(Bucket inside)

H0554 不锈钢圆形垃圾桶
Stainless steel round dustbin

● 容量 Capacity	6L
● 产品规格 Product size	∅ 23.6X30.6CM
● 纸箱尺寸 Carton size	29X29X34.2CM
● 包装数量 Packing	1个/箱(1PC/CTN)
● 颜色 Color	银色 Silver



内桶(Bucket inside)

H0557 不锈钢脚踏式方形垃圾桶
Stainless steel squareness dustbin with pedal

● 容量 Capacity	6L
● 产品规格 Product size	24.8X20X27CM
● 纸箱尺寸 Carton size	28.3X28.3X30.8CM
● 包装数量 Packing	1个/箱(1PC/CTN)
● 颜色 Color	银色 Silver



内桶(Bucket inside)

H0558 不锈钢脚踏式方形垃圾桶
Stainless steel squareness dustbin with pedal

● 容量 Capacity	8L
● 产品规格 Product size	24.8X20X33CM
● 纸箱尺寸 Carton size	28.3X28.3X36.8CM
● 包装数量 Packing	1个/箱(1PC/CTN)
● 颜色 Color	银色 Silver



内桶(Bucket inside)

H0555 不锈钢圆形垃圾桶
Stainless steel round dustbin

● 容量 Capacity	8L
● 产品规格 Product size	∅ 23.6X36.3CM
● 纸箱尺寸 Carton size	29X29X39.9CM
● 包装数量 Packing	1个/箱(1PC/CTN)
● 颜色 Color	银色 Silver



内桶(Bucket inside)

H0556 不锈钢方形垃圾桶
Stainless steel squareness dustbin

● 容量 Capacity	10L
● 产品规格 Product size	∅ 23.6X43.3CM
● 纸箱尺寸 Carton size	29X29X46.9CM
● 包装数量 Packing	1个/箱(1PC/CTN)
● 颜色 Color	银色 Silver



内桶(Bucket inside)

H0559 不锈钢脚踏式方形垃圾桶
Stainless steel squareness dustbin with pedal

● 容量 Capacity	10L
● 产品规格 Product size	24.8X20X39CM
● 纸箱尺寸 Carton size	28.3X28.3X42.8CM
● 包装数量 Packing	1个/箱(1PC/CTN)
● 颜色 Color	银色 Silver



内桶(Bucket inside)

H0560 不锈钢脚踏式圆形垃圾桶
Stainless steel round dustbin with pedal

● 容量 Capacity	6L
● 产品规格 Product size	∅ 23.6X26CM
● 纸箱尺寸 Carton size	30X30X31.5CM
● 包装数量 Packing	1个/箱(1PC/CTN)
● 颜色 Color	银色 Silver



内桶(Bucket inside)

H0561 不锈钢脚踏式圆形垃圾桶
Stainless steel round dustbin with pedal

● 容量 Capacity	8L
● 产品规格 Product size	∅ 23.6X32CM
● 纸箱尺寸 Carton size	30X30X37.5CM
● 包装数量 Packing	1个/箱(1PC/CTN)
● 颜色 Color	银色 Silver



内桶(Bucket inside)

H0562 不锈钢脚踏式圆形垃圾桶
Stainless steel round dustbin with pedal

● 容量 Capacity	10L
● 产品规格 Product size	∅ 23.6X39CM
● 纸箱尺寸 Carton size	30X30X44.5CM
● 包装数量 Packing	1个/箱(1PC/CTN)
● 颜色 Color	银色 Silver



H0621 18升脚踏式卫生间桶
18L Sanitary bin with pedal

● 容量 Capacity	18L
● 产品规格 Product size	36X18X57CM
● 纸箱尺寸 Carton size	38X36.5X96.5CM
● 包装数量 Packing	6个/箱(6PCS/CTN)
● 颜色 Color	灰、蓝 Gray、Blue

美观 洁净
Beautiful and clean



H0631 38升分类垃圾桶
38L Classified dustbin

● 容量 Capacity	38L
● 产品规格 Product size	44.5X30.5X84CM
● 纸箱尺寸 Carton size	42X29X44CM
● 包装数量 Packing	1个/箱(1PC/CTN)
● 颜色 Color	白色 White



H0632 60升分类垃圾桶
60L Classified dustbin

● 容量 Capacity	20LX3
● 产品规格 Product size	55.5X35.5X51.5CM
● 纸箱尺寸 Carton size	36.5X24.5X63.5CM
● 包装数量 Packing	1个/箱(1PC/CTN)
● 颜色 Color	白色 White



H0623 22升脚踏式卫生间桶
22L Sanitary bin with pedal

● 容量 Capacity	22L
● 产品规格 Product size	55X15X54CM
● 纸箱尺寸 Carton size	52.5X46.5X85.5CM
● 包装数量 Packing	6个/箱(6PCS/CTN)
● 颜色 Color	白色 White



H0624 自动感应卫生间桶
Sanitary bin with sensor

● 容量 Capacity	22L
● 产品规格 Product size	51.5X15X54CM
● 纸箱尺寸 Carton size	52.5X49X85.5CM
● 包装数量 Packing	6个/箱(6PCS/CTN)
● 颜色 Color	白色 White



H0612 45L脚踏式垃圾桶
45L Garbage can with pedal

- 容量 Capacity 45L
- 产品规格 Product size 41X39.8X60CM
- 纸箱尺寸 Carton size 42.5X41X96CM
- 包装数量 Packing 4个/箱(4PCS/CTN)
- 颜色 Color 黄、灰
Yellow、Gray



H0613 68L脚踏式垃圾桶
68L Garbage can with pedal

- 容量 Capacity 68L
- 产品规格 Product size 50.4X41.2X67.3CM
- 纸箱尺寸 Carton size 49X41X82.5CM
- 包装数量 Packing 3个/箱(3PCS/CTN)
- 颜色 Color 黄、灰
Yellow、Gray



H0616 70L垃圾桶
70L Garbage can

- 容量 Capacity 70L
- 产品规格 Product size 45X44X68CM
- 纸箱尺寸 Carton size 45X45X125.5CM
- 包装数量 Packing 5个/箱(5PCS/CTN)
- 颜色 Color 黄、灰、蓝、绿
Yellow、Gray、Blue、Green



H0615 70L脚踏式垃圾桶
70L Garbage can with pedal

- 容量 Capacity 70L
- 产品规格 Product size 45X44X68CM
- 纸箱尺寸 Carton size 45X45X125.5CM
- 包装数量 Packing 5个/箱(5PCS/CTN)
- 颜色 Color 黄、灰、蓝、绿
Yellow、Gray、Blue、Green



H0701



H0702



H0703



H0704



H0705



H0706



H0707



H0708



H0709



H0710



H0711



H0712



H0713



H0714



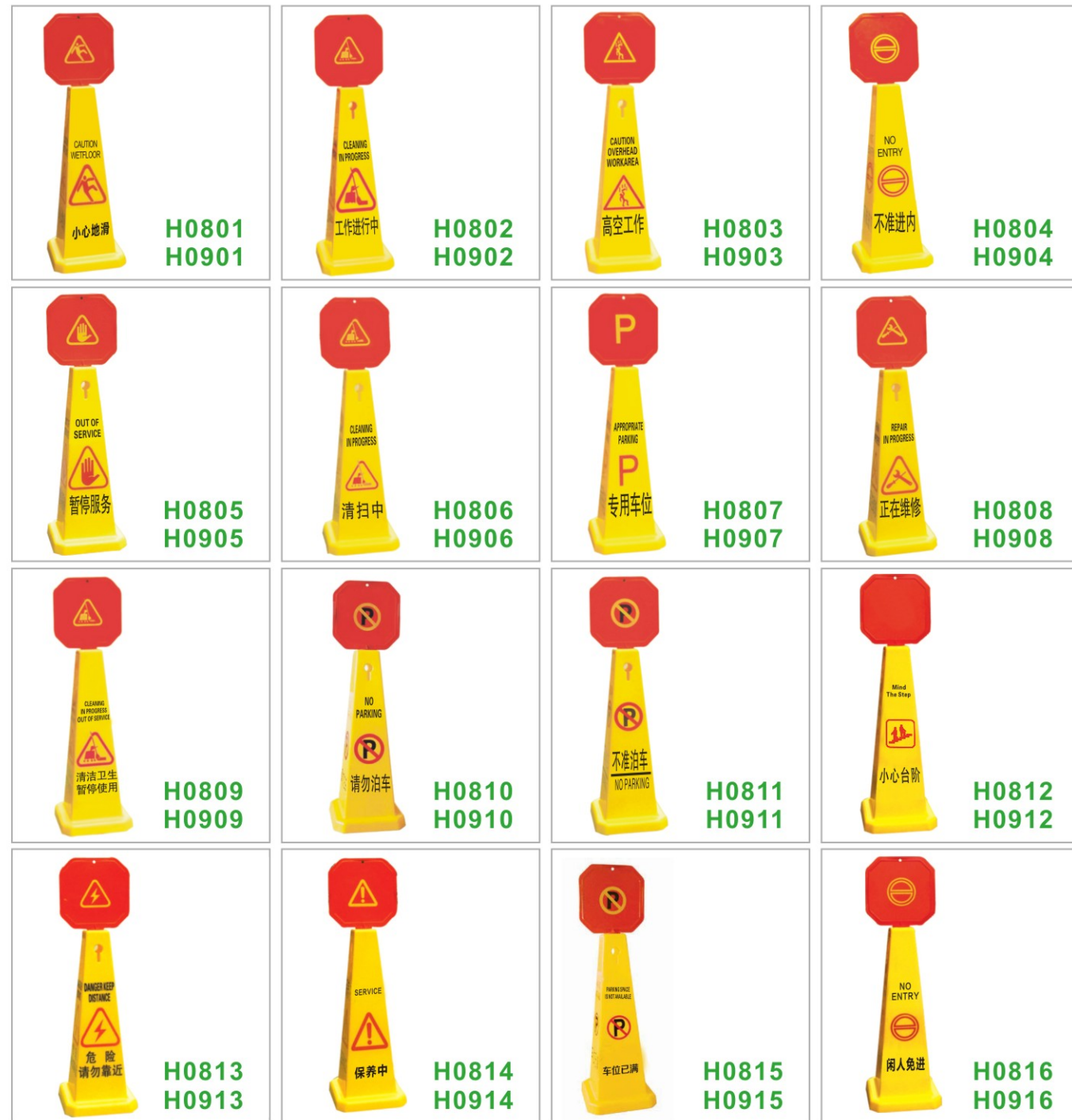
H0715



H0716

H0701-0716 A字型告示牌
Warning sign

- 产品规格 Product size 24"
- 纸箱尺寸 Carton size 31.5X27.5X64CM
- 包装数量 Packing 10个/箱(10PCS/CTN)



H0801-0816 小号直立式告示牌
Caution cone(S)

- 产品规格 Product size 28X28X93CM
- 纸箱尺寸 Carton size 94X45X33CM
- 包装数量 Packing 10个/箱(10PCS/CTN)

H0901-0916 大号直立式告示牌
Caution cone(L)

- 产品规格 Product size 32X32X115CM
- 纸箱尺寸 Carton size 118X48X35CM
- 包装数量 Packing 10个/箱(10PCS/CTN)



H1131 防风垃圾铲
Plastic dustpan

- 产品规格 Product size 31.5X28.5X82.5CM
- 纸箱尺寸 Carton size 89X32X22CM
- 包装数量 Packing 6套/箱(6PCS/CTN)
- 颜色 Color 灰、黑
Gray, Black



H1133 防风垃圾铲
Plastic dustpan

- 产品规格 Product size 31.5X30X83CM
- 纸箱尺寸 Carton size 89X32X22CM
- 包装数量 Packing 6套/箱(6PCS/CTN)
- 颜色 Color 灰、黑
Gray, Black



H1132 防风垃圾铲带扫把
Plastic dustpan with broom

- 产品规格 Product size 31.5X28.5X82.5CM
- 纸箱尺寸 Carton size 89X32X22CM
- 包装数量 Packing 6套/箱(6PCS/CTN)
- 颜色 Color 灰、黑
Gray, Black



H1134 防风垃圾铲带扫把
Plastic dustpan with broom

- 产品规格 Product size 31.5X30X83CM
- 纸箱尺寸 Carton size 89X32X22CM
- 包装数量 Packing 6套/箱(6PCS/CTN)
- 颜色 Color 灰、黑
Gray, Black



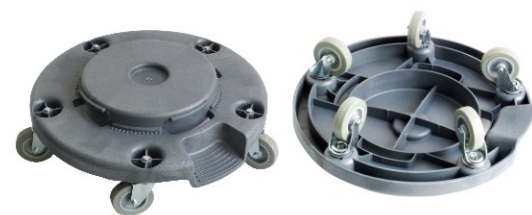
H1101 杂物篮
Tool basket

- 产品规格 Product size 38.5X32.5X17CM
- 纸箱尺寸 Carton size 40X35X60CM
- 包装数量 Packing 15个/箱(15PCS/CTN)
- 颜色 Color 灰色 Gray



H1122 餐具收集盘(小号)
Tableware collection tray(S)

- 产品规格 Product size 37.5X32X14CM
- 纸箱尺寸 Carton size 39X33X47CM
- 包装数量 Packing 20个/箱(20PCS/CTN)
- 颜色 Color 灰色 Gray



H0690 垃圾桶底座
Dolly

- 产品规格 Product size \varnothing 46X16CM
- 纸箱尺寸 Carton size 46X46X70CM
- 包装数量 Packing 6个/箱(6PCS/CTN)
- 颜色 Color 灰色 Gray



H1919 老虎夹
Clamp

- 纸箱尺寸 Carton size 42X26X32CM
- 包装数量 Packing 30个/箱 (30PCS/CTN)



H1121 餐具收集盘
Tableware collection tray

- 产品规格 Product size 53X38X15CM
- 纸箱尺寸 Carton size 55X40X62.5CM
- 包装数量 Packing 20个/箱(20PCS/CTN)
- 颜色 Color 灰色 Gray



H0692 垃圾桶挂袋
Bag for garbage can

- 产品规格 Product size 77X55CM
- 纸箱尺寸 Carton size 43X34X48CM
- 包装数量 Packing 20个/箱(20PCS/CTN)
- 颜色 Color 黄色 Yellow



H1138 拾物器
Pick up tool

- 产品规格 Product size 16X13X85.5CM
- 纸箱尺寸 Carton size 90X36X37CM
- 包装数量 Packing 50个/箱(50PCS/CTN)
- 颜色 Color 绿色 Green



H1139 拾物器
Pick up tool

- 产品规格 Product size 14X13X86CM
- 纸箱尺寸 Carton size 90X36X37CM
- 包装数量 Packing 50个/箱(50PCS/CTN)
- 颜色 Color 黑色 Black



清洁铲
Cleaning shovel

型号 Item No	产品尺寸 Product size
H1204	20CM
H1205	30CM
H1206	40CM
H1207	60CM
H1208	80CM
H1209	100CM

颜色 Color 黄, 蓝 Yellow, blue



H1211 清洁铲
Cleaning shovel

颜色 Color 黄, 蓝 Yellow, blue



H1201 地板铲刀
Floor scraper



H1203 塑料玻璃铲刀
Plastic window scraper



H1301-1304 不锈钢玻璃刮
Stainless steel window squeegee

型号 Item No	尺寸 Size
H1301	25CM
H1302	35CM
H1303	40CM
H1304	45CM



H1317-1320 不锈钢玻璃刮(带螺旋)
Stainless steel window squeegee (With Screw)

型号 Item No	尺寸 Size
H1317	25CM
H1318	35CM
H1319	40CM
H1320	45CM



H1231 地板铲刀刀片
Blade for H1201



H1232 玻璃铲刀刀片
Blade for H1202



H1233 塑料玻璃铲刀刀片
Blade for H1203



H1234 清洁铲刀刀片
Blade for cleaning shovel



H1202 不锈钢玻璃铲刀
Stainless steel glass scraper



H1241 刀片夹
Blade holder



H1305-1308 塑料铝合金玻璃刮
Plastic&alnico window squeegee

型号 Item No	尺寸 Size
H1305	25CM
H1306	35CM
H1307	40CM
H1308	45CM



玻璃刮胶条 Rubber strip

型号 Item No	尺寸 Size
H1390	105CM
H1391	25CM
H1392	35CM
H1393	40CM
H1394	45CM



H1401-1403 普通抹水器
Ordinary window washer

型号 Item No	尺寸 Size
H1401	35CM
H1402	40CM
H1403	45CM

T柄颜色 T handle color 黑、黄、蓝 (Black/Yellow/Blue)



H1404-1406 豪华抹水器
Deluxe window washer

型号 Item No	尺寸 Size
H1404	35CM
H1405	40CM
H1406	45CM

T柄颜色 T handle color 黑、黄、蓝 (Black/Yellow/Blue)



H1411-1413 普通毛头
Ordinary Replacement

型号 Item No	尺寸 Size
H1411	35CM
H1412	40CM
H1413	45CM



H1414-1416 豪华毛头
Deluxe Replacement

型号 Item No	尺寸 Size
H1414	35CM
H1415	40CM
H1416	45CM



H1407-1409 两用擦窗器
Dual purpose window cleaner

型号 Item No	尺寸 Size
H1407	35CM
H1408	40CM
H1409	45CM



H1421-1423 手柄
Window Washer Handle

型号 Item No	尺寸 Size
H1421	35CM
H1422	40CM
H1423	45CM

颜色 Color 黑、黄、蓝 (Black/Yellow/Blue)



H1501 高级蜡拖
Standard mop



H1502 高级蜡拖
Standard mop



H1592 蜡拖头
Mop head



H1511 蜡拖夹
Mop clip



H1512 蜡拖夹
Mop clip



H1601-1604 高级尘推
Standard dust mop

型号 Item No	尺寸 Size
H1601	40CM
H1602	60CM
H1603	90CM
H1604	110CM



H1621-1624 豪华尘推
Deluxe dust mop

型号 Item No	尺寸 Size
H1621	40CM
H1622	60CM
H1623	90CM
H1624	110CM



H1611-1614 高级尘罩
Standard dust mop refill

型号 Item No	尺寸 Size
H1611	40CM
H1612	60CM
H1613	90CM
H1614	110CM



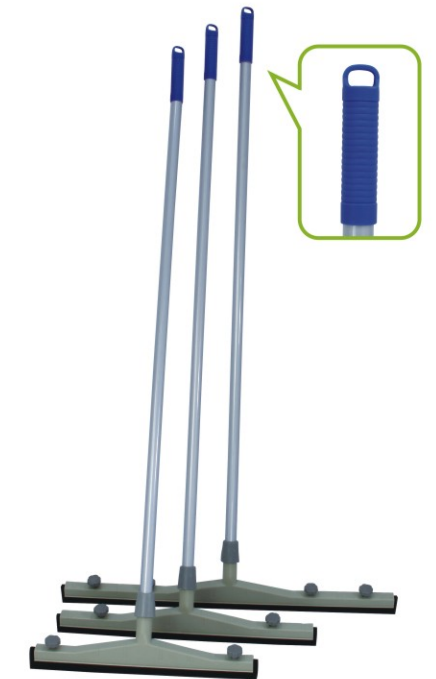
H1631-1634 豪华尘罩
Deluxe dust mop refill

型号 Item No	尺寸 Size
H1631	40CM
H1632	60CM
H1633	90CM
H1634	110CM



塑料推水器 Plastic floor squeegee

型号 Item No	产品名称 Product name
H1741	45CM 塑料推水器 45CM Plastic floor squeegee
H1742	55CM 塑料推水器 55CM Plastic floor squeegee
H1743	75CM 塑料推水器 75CM Plastic floor squeegee



塑料推水器 Plastic floor squeegee

型号 Item No	产品名称 Product name
H1744	45CM 塑料推水器 45CM Plastic floor squeegee
H1745	55CM 塑料推水器 55CM Plastic floor squeegee
H1746	75CM 塑料推水器 75CM Plastic floor squeegee



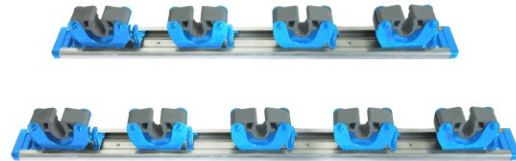
铁板推水器 Metal floor squeegee

型号 Item No	产品名称 Product name
H1701	45CM 直板胶条推水器 45CM Straight rubber floor squeegee
H1702	55CM 直板胶条推水器 55CM Straight rubber floor squeegee
H1703	60CM 直板胶条推水器 60CM Straight rubber floor squeegee
H1704	75CM 直板胶条推水器 75CM Straight rubber floor squeegee
H1711	45CM 直板海绵推水器 45CM Straight sponge floor squeegee
H1712	55CM 直板海绵推水器 55CM Straight sponge floor squeegee
H1713	60CM 直板海绵推水器 60CM Straight sponge floor squeegee
H1714	75CM 直板海绵推水器 75CM Straight sponge floor squeegee
H1721	45CM 弯板胶条推水器 45CM Curved rubber floor squeegee
H1722	55CM 弯板胶条推水器 55CM Curved rubber floor squeegee
H1723	60CM 弯板胶条推水器 60CM Curved rubber floor squeegee
H1724	75CM 弯板胶条推水器 75CM Curved rubber floor squeegee
H1731	45CM 弯板海绵推水器 45CM Curved sponge floor squeegee
H1732	55CM 弯板海绵推水器 55CM Curved sponge floor squeegee
H1733	60CM 弯板海绵推水器 60CM Curved sponge floor squeegee
H1734	75CM 弯板海绵推水器 75CM Curved sponge floor squeegee



长柄地板刷 Floor brush

型号 Item No	产品名称 Product name
H1751	10"长柄地板刷 10"Floor brush
H1752	18"长柄地板刷 18"Floor brush
H1753	24"长柄地板刷 24"Floor brush
包装数量 Packing	杆: 20支/箱(20PCS/CTN) 头: 20个/箱(20PCS/CTN)



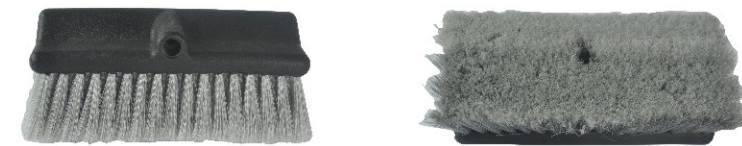
工具架 Tool hanger

型号 Item No	产品名称 Product name
H1171	4头 Four holder
H1172	5头 Five holder



H1747 铝合金推水器
Floor squeegee

● 产品规格 Product size	145X88X95CM
● 纸箱尺寸 Carton size	140X13.5X50CM
● 包装数量 Packing	2台/箱(2PCS/CTN)



H1761 清洗刷
Cleaning brush

● 包装数量 Packing	12个/箱 (12PCS/CTN)
----------------	-------------------



通水伸缩杆 Water through telescopic pole

型号 Item No	产品名称 Product name
H1821	1.66M 两节通水伸缩杆 1.66M 2 Pieces joint
H1822	3.4M 三节通水伸缩杆 3.4M 3 Pieces joint





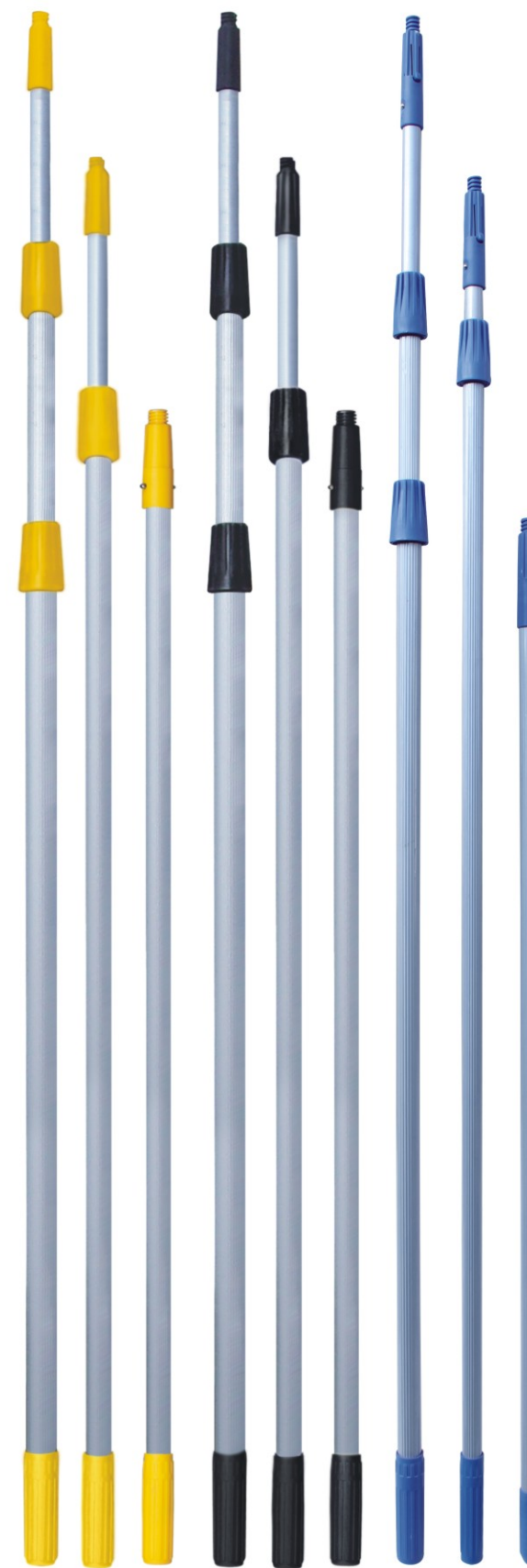
H1161 双面脚踏梯
Double foot ladder

- 产品规格 Product size 47X52X58CM
- 纸箱尺寸 Carton size 46.5X36.5X64CM
- 包装数量 Packing 2个/箱 (2PCS/CTN)
- 颜色 Color 灰、蓝、黄 Gray、Blue、Yellow



H1141 玻璃清洁套装工具
Window cleaning kit

- 产品规格 Product size 125X25X7CM
- 纸箱尺寸 Carton size 37X26.5X125.5CM
- 包装数量 Packing 5盒/箱(5PCS/CTN)



伸缩杆 Telescopic pole

型号 Item No	规格 Specification
H1800	1.2M 单节 1.2M 1 piece joint
H1801	1.2M 双节 1.2M 2 piece joint
H1802	2.4M 双节 2.4M 2 piece joint
H1803	3.0M 双节 3.0M 2 piece joint
H1804	3.6M 双节 3.6M 2 piece joint
H1805	4.5M 双节 4.5M 2 piece joint
H1806	4.0M 三节 4.0M 3 piece joint
H1807	4.5M 三节 4.5M 3 piece joint
H1808	6.0M 三节 6.0M 3 piece joint
H1809	8.0M 三节 8.0M 3 piece joint
H1810	9.0M 三节 9.0M 3 piece joint
H1811	3.6M 三节 3.6M 3 piece joint



H1901 手压式喷壶
Sprayer

● 容量 Capacity 350ML



H1902 手压式喷壶
Sprayer

● 容量 Capacity 750ML



H1903 手压式喷壶
Sprayer

● 容量 Capacity 650ML



H1904 手压式喷壶
Sprayer

● 容量 Capacity 500ML



H1911 腰形管道扫
Bended tube brush

● 产品规格 Product size 37X10X9CM



H1912 圆形尘埃扫
Ringed dust brush

● 产品规格 Product size 39X34X10CM



H2001 大卷纸箱
Paper dispenser

● 产品规格 Product size 27X12.2X27.3CM
● 纸箱尺寸 Carton size 56X40.5X59CM
● 包装数量 Packing 12个/箱(12PCS/CTN)



H2002 大卷纸箱
Paper dispenser

● 产品规格 Product size 27X12.2X27.3CM
● 纸箱尺寸 Carton size 56X40.5X59CM
● 包装数量 Packing 12个/箱(12PCS/CTN)



H2003 大卷纸箱
Paper dispenser

● 产品规格 Product size 26.2X11.7X27.3CM
● 纸箱尺寸 Carton size 56X40.5X59CM
● 包装数量 Packing 12个/箱(12PCS/CTN)



H2004 大卷纸箱
Paper dispenser

● 产品规格 Product size 26.2X11.7X27.3CM
● 纸箱尺寸 Carton size 56X40.5X59CM
● 包装数量 Packing 12个/箱(12PCS/CTN)



H2005 擦手纸箱
Paper dispenser

- 产品规格 Product size 26X10X20.5CM
- 纸箱尺寸 Carton size 57.5X56X46CM
- 包装数量 Packing 20个/箱(20PCS/CTN)



H2006 擦手纸箱
Paper dispenser

- 产品规格 Product size 27.5X10.5X20CM
- 纸箱尺寸 Carton size 57.5X56X46CM
- 包装数量 Packing 20个/箱(20PCS/CTN)



H2021 不锈钢大卷纸箱(镜钢)
Stainless steel paper dispenser(Mirror surface)

- 产品规格 Product size 25X11.6X26CM
- 纸箱尺寸 Carton size 55X55X66CM
- 包装数量 Packing 20个/箱(20PCS/CTN)



H2022 不锈钢大卷纸箱(砂钢)
Stainless steel paper dispenser(Matte surface)

- 产品规格 Product size 25X11.6X26CM
- 纸箱尺寸 Carton size 55X55X66CM
- 包装数量 Packing 20个/箱(20PCS/CTN)



H2007 擦手纸箱
Paper dispenser

- 产品规格 Product size 26X9.6X21.6CM
- 纸箱尺寸 Carton size 55X54X48CM
- 包装数量 Packing 20个/箱(20PCS/CTN)



H2008 擦手纸箱
Paper dispenser

- 产品规格 Product size 26X9.6X21.6CM
- 纸箱尺寸 Carton size 55X54X48CM
- 包装数量 Packing 20个/箱(20PCS/CTN)



H2111 单头皂液盒
Soap dispenser

- 容量 Capacity 350ML
- 产品规格 Product size 6.4X7X21.5CM
- 纸箱尺寸 Carton size 75X44X48CM
- 包装数量 Packing 100个/箱(100PCS/CTN)



H2112 双头皂液盒
Soap dispenser

- 容量 Capacity 350MLX2
- 产品规格 Product size 13X7X21.5CM
- 纸箱尺寸 Carton size 73X42X48CM
- 包装数量 Packing 50个/箱(50PCS/CTN)



H2202 喷香机
Perfume dispenser

- 产品规格 Product size 8.4X8X19.9CM
- 纸箱尺寸 Carton size 48X46X44CM
- 包装数量 Packing 50个/箱(50 PCS/CTN)



H2203 喷香机
Perfume dispenser

- 产品规格 Product size 9.2X9.1X24CM
- 纸箱尺寸 Carton size 52X52X52CM
- 包装数量 Packing 50个/箱(50 PCS/CTN)



H2914 挤水型恭刷
Toilet brush



H2915 浴缸刷
Bathtub brush



H2204 喷香机
Perfume dispenser

- 产品规格 Product size 8.6X9X23.5CM
- 纸箱尺寸 Carton size 51X49X51CM
- 包装数量 Packing 50个/箱(50 PCS/CTN)



H2290 空气清新剂
Air freshener

- 容量 Capacity 300ML
- 纸箱尺寸 Carton size 43X29X48CM
- 包装数量 Packing 72瓶/箱(72 PCS/CTN)



H2401 干手机
Hand dryer

- 产品尺寸 Product size 24X23X24CM
- 工作电压 Voltage 220V~(50-60HZ)
- 功率 Power 2000W
- 防水等级 Waterproof grade IPX1
- 风速 Wind speed >11M/S
- 干手时间 Dry hands time 8-10秒 8-10S
- 纸箱尺寸 Carton size 57X55X53.5CM
- 包装数量 Packing 8台/箱(8PCS/CTN)



消毒蓝泡泡

适用于各类型式马桶，放于马桶水箱内（远离出水口）

能有效快捷地消除卫生间异味，净化空气，并对抑制和杀灭细菌、病毒等有良好效果



H2701 蓝泡泡
Disinfection blue bubble

- 净含量 Net content 50G*1
- 包装数量 Packing 240卡/箱(240PCS/CTN)
- 纸箱尺寸 Carton size 47X31.5X29CM

H2702 蓝泡泡
Disinfection blue bubble

- 净含量 Net content 50G*2
- 包装数量 Packing 180卡/箱(180PCS/CTN)
- 纸箱尺寸 Carton size 46X41.5X29CM



H2741 香晶球
Deodorizer

- 纸箱尺寸 Carton size 39X20X33CM
- 包装数量 Packing 100包/箱(100BAGS/CTN)



H2742 香晶球
Deodorizer

- 纸箱尺寸 Carton size 39X20X33CM
- 包装数量 Packing 30包/箱(30BAGS/CTN)



H2703 蓝泡泡
Disinfection blue bubble

- 净含量 Net content 50G*4
- 包装数量 Packing 80卡/箱(80PCS/CTN)
- 纸箱尺寸 Carton size 45X29.5X27CM



H2721 尿斗香饼（三角形）
Urinal lump

- 纸箱尺寸 Carton size 62X38X25CM
- 包装数量 Packing 50包/箱(50PCS/CTN)



H2722 尿斗香饼（圆形）
Urinal lump

- 纸箱尺寸 Carton size 62X38X30CM
- 包装数量 Packing 50包/箱(50PCS/CTN)



H5011 巴素擦铜水
Metal polish

- 容量 Capacity 400ML
- 包装数量 Packing 12瓶/箱(12PCS/CTN)



H2751 洁而亮特强抛光液
SIL Cleanser

- 容量 Capacity 500ML
- 纸箱尺寸 Carton size 29X20X28CM
- 包装数量 Packing 16瓶/箱(16PCS/CTN)



H2753 洁而亮特强清洁乳
KIP Cleanser

- 容量 Capacity 500ML
- 纸箱尺寸 Carton size 29X20X28CM
- 包装数量 Packing 16瓶/箱(16PCS/CTN)



H5001 K2石材保养剂
K2 Stone sealer

- 容量 Capacity 5L
- 包装数量 Packing 3罐/箱(3CANS/CTN)



H5002 K3石材保养剂
K3 Stone Sealer

- 容量 Capacity 5L
- 包装数量 Packing 3罐/箱(3CANS/CTN)



H2752 碧丽珠家私喷蜡
Furniture wax

- 容量 Capacity 350g
- 纸箱尺寸 Carton size 27X20X22CM
- 包装数量 Packing 12瓶/箱(12PCS/CTN)



H5312 全能清洁剂
All purpose cleanser

- 容量 Capacity 500ML
- 包装数量 Packing 24瓶/箱(24PCS/CTN)



H5313 玻璃水
Glass cleanser

- 容量 Capacity 500ML
- 包装数量 Packing 24瓶/箱(24PCS/CTN)



H5320 洗手液(红/绿)
Liquid hand soap(Red / Green)

- 容量 Capacity 500ML
- 包装数量 Packing 12瓶/箱(12PCS/CTN)



H5021 氯漂粉
BLEACH POWDER

迅速高效的有机氯漂白剂，独创的低PH值配方，性质温和、漂白去污，不伤布料。适用于棉、聚酯、混纺及其它织料。白色粉状，可在主洗过程完成后或主洗过程后期加入。使用温度：70-85度。

A high-powered organic chloride-containing powder bleach at lower PH value. Without any damage to fabric, it gives an excellent effect on the washing of cottons, linen and blend fabric. It is white powder, used at final stage of washing. Applied temperature: 70-85°C

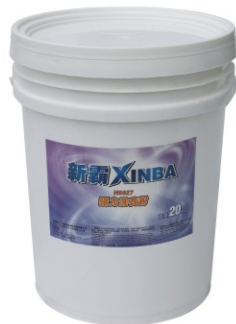


H5022 彩漂粉
OXYGEN BLEACH POWDER

高效安全漂白剂，既能去除顽固色斑，又无损织物纤维的原有颜色，并能增白衣物。适用于白色及彩色的棉、聚酯、混纺或其它合成织料的漂白。

白色粉状，可在主洗过程同时或主洗过程后期加入。使用温度：75-90°C。

An oxygen-containing powder bleach characterized in safety to fabric, whitening and brightening fabric. Used to bleach white or color cotton, polyester and blend fabric. It is white powder, used when main washing has ended. Applied temperature: 75-90°C

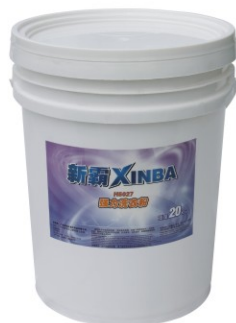


H5023 荧光中和酸
FLUORESCENT SOUR

独创的有机酸荧光剂，性质极温和，在中和织物残留的碱性的同时，更能整合水中的钙铁，其特效荧光成分，能显著增加织物的白度，令色彩更加鲜艳。适用于棉、聚酯、混纺或其它合成织料。

浅黄色粉状，在碱性洗涤完成后应用，可与柔顺剂、浆粉同时使用。使用温度：常温。

Outstanding brightener, sour and blueing agent characterized in highly effective fluorescent agent. It can neutralize various bases. Its special formulation can chelated ferric and calcium ions and prevent the yellowish and decolour of fabric. Safe to both white and color clothes. Yellowish powder. Used when main cleaning procedure has ended. Can be used together with fabric softener and starch. Applied temperature: room temperature.



H5024 油污乳化剂
STAINS EMULSIFIER

由特殊的表面活性剂、溶剂、荧光素等精配而成液体乳化剂，有强劲的乳化脱脂力、渗透力，彻底去除顽固重油污。适用于去除棉、聚酯、混纺或其它合成织料上的重油污。

无色液体，可与洗衣粉同时使用，各温度下均可使用。

A high emulsifying liquid degreaser with fine degreasing ability. A specific product for heavy-duty dirt and general stain and can be used to cotton, synthetic and blend fabric. It is a colorless liquid and can be added to washing machine directly together with synthetic detergent powder. Can be used in any temperature.



H5025 织物柔顺剂(水剂)
FABRIC SOFTENER

特效高活性阳离子配方，能迅速渗透织物，消除静电，减少织物互相粘着，持久疏松纤维，令衣物松软顺滑，气味芬芳。适用于无浆布料，如浴巾、床单、羊毛织物。

在洗涤之最后阶段使用。使用温度：常温。

A powerful fabric conditioner and softener. Excellent for softening and loosening fabric, eliminating static. Use to cotton, polyesters, blend fabric and other synthetic fabrics. Packed in state of white powder or thick liquid. Used at final stage of washing. Applied temperature: room temperature.



H5027 强力洗衣粉
STRONG DETERGENT POWDER

独特的高活性物配方，可轻松去除中度及严重性污垢，尤其对动、植物的油污功效显著，是重垢棉、麻织物的首选洗衣粉。用于洗涤厨衣、台布、餐巾，省时省力。

白色粉状，主洗过程使用。使用温度：70-90°C

A particularly concentrated powerful heavy-duty synthetic powder. It can be used in washing heavy-duty grease. Ideal for cotton and linen such as table cloth, kitchen uniform and napkin etc. White hygroscopic powder used for the main washing procedure at 70-90°C.



H5028 晶亮增白洗衣粉
COMMON DETERGENT POWDER

通用的增白洗衣粉，中高活性配方，性质温和安全，其强劲均衡的去污能力加上特种荧光剂，能使织物保持光亮鲜艳。广泛用于棉、聚酯、混纺及其它各颜色的织物。

白色粉状，主洗过程中使用。使用温度：70-90度。

A widely used synthetic powder, characterized in moderate alkalinity, safety and high bleach ability. Its higher detergency, along with special type of fluorescence agent, makes the fabric whiter and brighter. Used for washing cotton, polyester, blending fabric etc. White powder. Suited to the main washing procedure. Applied temperature: 70-90°C.



H5029 低温酵素洗衣粉
FERMENT DETERGENT POWDER

独特的生物活性酶配方，专门对付无法使用高温洗涤的场合，其特效的生物酵素，能迅速分解织物上的油脂、汗迹、蛋白质等污垢，且不伤织物。可广泛用于棉、聚酯、混纺及其它各颜色的织物。

白色粉状，主洗过程使用。使用温度：常温。

A blend of specially selected surfactants, alkalies and enzymes. Provides efficient cleaning at lower temperature to all kinds of stains including rease, blood and protein etc. Use for cleaning cottons, polyesters, blending fabric etc. White powder used for the main washing procedure. Applied temperature: room temperature.



H5201 特光超级蜡水
WORLD CLASS FLOOR FINISH

本品具有固体含量高，快干，抗尘，防滑，不会变黄，光度持久及耐用等特点，可大大节省地板护理之人力，物力及时间。适用于胶地板，云石地板，水磨石地，水晶油处理之后的木地板等。调稀后更适用于高速磨光之地板保养，能清除鞋跟痕迹，经高速磨光后，蜡面会更光更硬及更耐用。

This product has a high solids acrylic. It is fast drying, anti-dust, anti-skid and will not turn yellow. It makes the cleaning work become much easier. It is suitable for rubber flooring, marble flooring, terrazzo, crystal oil processed wood floors. It can also be used for high speed polish after diluted.



H5202 全能免抛面蜡
ALL PURPOSE FLOOR FINISH

本品配方独特，含有全能型高分子聚合物，附着力强，坚固光亮，无需抛光，使用方便，用后蜡面不易磨损。适用于大理石，花岗石，胶地板，木地板，环氧聚氨酯，水磨石等材质的地板。

This product is a specially formulated versatile polymers, it has strong adhesion, can be used without polishing. It is suitable for marble, granite, rubber flooring, wood flooring, epoxy urethane, terrazzo.



H5203 高速面蜡
HIGH SPEED FLOOR FINISH

本品需配合抛光机使用，其蜡质持久光亮，附着力强，坚固快干，流平性强，不变黄。适用于大理石，花岗石，胶地板，木地板，环氧聚氨酯，水磨石等材质的地面。

This product must be used with the high speed polishing machine, it has strong adhesion and it is fast drying and will not turn yellow. It can be used for marble, granite, rubber flooring, wood flooring, epoxy urethane, terrazzo etc.



H5204 封地底蜡
FLOOR SEALER

本品渗透力强，能深入渗透地板表面，形成一层高强度的保护膜，可防止石材粉化，并具有填充，修补，流平，粘粘等功能，起到保护地面的作用。适用于大理石，花岗石，胶地板，木地板，水磨石，环氧聚氨酯等材质。与面蜡一起使用，效果更好，能令地面保持持久光亮。

The product can penetrate deep into the floor surface and forming a layer of high strength protective film. It can prevent stone pulverization. It also has functions of filling, patching, leveling and adhesion. It can be used for marble, granite, rubber flooring, wood flooring, epoxy urethane, terrazzo etc.



H5205 强力起蜡水
WAX STRIPPER

该产品渗透性好，溶解能力强，能快速有效地溶解各种蜡质及其它油状物质。稀释后更可清洗任何硬质地板和PVC胶地面的表面油污及水性污垢。

The product has good permeability and solubility. It can dissolve all kinds of wax and other oily substances quickly and effectively. After diluted, it can clean the oil stains and water-based dirt on the surface of any hard floor and PVC floor.



H5206 柠檬家私蜡
FURNITURE POLISH

该产品含特殊去污抗尘因子，令去污，除尘，上光，保护一次完成。使用后能令家具表面保持润泽，更能保护家具免受空气及污渍侵蚀，防止腐化。适用于木制家具，漆面，真皮，石材，金属，电器，人造革，硬塑PVC，ABS等材质表面。

This product contains special anti-dust and decontamination factor, which make decontamination, dust, polish and protect can be finished in one step. After use it can keep the furniture in good shape and protect furniture. It can be used for the surface of wooden furniture, lacquer, leather, stone, metal, electrical appliances, leather, hard plastic PVC, ABS etc.



H5207 高泡地毯水
RICH FOAM CARPET SHAMPOO

本品为专业的地毯清洁剂，泡沫丰富，去污力强，适用于各种地毯清洁，用后能令地毯光洁，柔软，蓬松，鲜艳如新。

This product is a professional carpet cleanser with rich foam and strong decontamination, it is suitable for a variety of carpets.



H5208 低泡地毯水
LESS FOAM CARPET SHAMPOO

本品为专业的地毯清洁剂，泡沫特少，去污力强，适用于各种地毯清洁，用后能令地毯光洁，柔软，蓬松，鲜艳如新。

This product is a professional carpet cleanser with less foam and strong decontamination, it is suitable for a variety of carpets.



H5209 快速消泡剂
DEFOAMER

本品适用于地毯抽洗机及吸水机，能迅速消除机器运作过程中产生的泡沫，并能抑制泡沫的形成，保障机械的正常工作，大大减低工作强度。

This product use for carpet extractor and wet vacuum cleaner. It can eliminate the foam produced during the operation quickly and it can inhibit the formation of foam to ensure the normal operation of machinery. This will make the cleaning work become much easier.



H5213 玻璃清洁剂
GLASS CLEANSER

本品能高效迅速地清洁玻璃，无需过水，不留痕迹，除玻璃外，也可以用于磁砖、镜面、不锈钢等。

This product can clean the glass quickly and efficiently, without crossing the water, after cleaning, it leave no trace on the glass surface, besides glass, it can also be used for tile, mirror, stainless steel, etc.



H5217 特效洗石水
STONE CLEANSER

本品由多种有机酸组成，采用高浓度配方，具有特强酸化作用，能有效去除建筑物，地面及外墙的瓷砖及马赛克上的顽固污渍，锈渍。

This product made from a high concentration and organic acids formula, it has a super acidification effect. It can remove effectively the stubborn stains, rust stains on the wall tiles and mosaics of buildings, ground and wall.



H5221 空气清新剂 (国际)
AIR FRESHENERS (INTERNATIONAL)

H5222 空气清新剂 (茉莉)
AIR FRESHENERS (JASMINE)

H5223 空气清新剂 (柠檬)
AIR FRESHENERS (LEMON)

本品采用独特配方，气味清新，能有效去除空气中的异味，适用于宾馆，酒店，家居及办公等环境。

The special formula of this product made it has fresh smell, it can effectively get rid of the undesirable smell in the air. It is suitable for use in hotels, restaurants, households and offices etc.



H5210 静电吸尘剂
ELECTROSTATIC DUST CLEANER

本品能增强尘推的吸尘去污能力，用后更能将尘推上的灰尘轻松抖落，大大减轻工作强度，适用于纯棉质尘推及任何光滑表面。

Apply this product to dust mop then it can adsorb dust easily when cleaning. After cleaning the dust can be shaken off easily also.



H5214 浴室清洁剂
BATHROOM CLEANSER

本品含有有机化合物，有消毒，辟臭的功效，能有效去除锈渍，水垢，尿渍，油渍，皂渍等，且在清洁的同时不会伤害物质表面及其附件，使用后更能留下清新气味。适用于浴缸，洗手盆，尿槽，坐厕，马赛克，水磨石等。

This product contains organic compounds, it can remove the rust stains, furring, urine stains, grease, soap stains etc. and it will not damage the material surface and its annex when you cleaning. It is suitable for use of bathtubs, washbasins, urine tank, toilet bowl, mosaic, terrazzo, etc.



H5218 强力除油剂
DEGREASER

本品适用于厨房，工厂，机修，食品加工等可水洗的表面，它能迅速渗透，乳化各种油性污垢，焦炭，重机油及食物性油污等，其卓越的去污乳化性能使清洁工作变得更简单易行，高效快捷。

This product is suitable for use of the washable surface in kitchens, factories, machine repair, food production processing etc. It can quickly penetrate, emulsify a variety of oily dirt, coke, heavy oil and food oil. these excellent functions of it make the cleaning work become much easier, faster and more efficient



H5219 洗手液(红色)
LIQUID HAND SOAP (RED)

H5220 洗手液(绿色)
LIQUID HAND SOAP (GREEN)

独特的滋润清爽配方，能保持皮肤天然营养成分，令双手柔润洁净并散发动人芳香。

This product made of special moisturizing formula. it can keep the natural nutrients on hands and after use, you can feel your hands soft, smooth, clean and with aromatic smell.



H5211 地毯除渍剂
CARPET STAIN REMOVER

本品能有效去除地毯及纤维表面的茶渍，咖啡渍，饮料渍，油渍，唇膏渍，血渍等，且对地毯无任何损伤。

This product can remove effectively the tea stains, coffee stains, drink stains, grease, lipstick stains, blood stains etc on carpet and fiber surface without damage the materials.



H5215 强力洁厕剂
BATHROOM CLEANSER

本品适用于清洁尿槽，坐厕，同时也可用于清洗洗手盆，浴缸，瓷盆，瓷砖等表面污渍，去污力强，除臭效果显著，清洗过后，更能留下清新香味。

This product is suitable for cleaning urinal tank, toilet bowl, but also can be used to clean the stains on surface of basins, bathtubs, ceramic tiles etc. after cleaning, the surface will carry with fresh fragrance.



H5030 84 除菌液
84 Sterilization Liquid

本品能有效去除地毯及纤维表面的茶渍，咖啡渍，饮料渍，油渍，唇膏渍，血渍等，且对地毯无任何损伤。

Apply to tableware, white and not faded cotton, hemp qualitative and man-made fiber fabric, the kitchen porcelain basin, bath cock, ceramic tile, trash can, toilets it lavatory cleaning eliminate bacterium.



H5224 洗衣液
DETERGENT

温和低敏配方，温和不伤手，不伤衣物纤维，添加洁净因子，深层去垢，不含磷、铝成分，易漂易洗，帮助衣物保持鲜亮色彩，衣服蓬松柔软更舒适。

Mild and low-sensitivity formula, mild and have no harm to bands, have no harm to clothing fibers, add clearing factors, deep cleansing, not contain phosphorus and aluminum constituents, easy to rinse and wash, help clothing maintain bright color, clothes are fluffy, soft and more comfortable.



H5212 全能清洁剂(中性)
ALL PURPOSE CLEANSER

超强配方，具有全面清洁，杀菌，消毒等功效，适用于清除油渍，炭渍，胶渍，茶渍及瓷砖表面污渍。

This product made of super formula and has function of comprehensive cleaning, sterilization and disinfection, it can be used to remove grease, carbon stains, glue stains, tea stains and the tile surface stains



H5216 不锈钢光亮剂
STAINLESS STEEL CLEANSER

专业用于不锈钢表面的清洁保养，产品去污力特强，能有效去除不锈钢，铜，铝，铬等表面的污渍，并能形成一层保护膜，使表面保持洁净光亮。

This product is a professional cleanser and maintenance for the surface of stainless steel, copper, aluminum, chromium etc. It can remove the dirt on these surface effectively, and at the same time, it can form a protective film to keep the surface clean and bright.



H5225 洗洁精
DETERGENT

全新环保无磷配方，泡沫丰富，快速清洁厨具，餐具表面污渍/油渍，令厨具/餐具更加洁净亮白，彻底干净。

New environmentally friendly and no phosphorus formula, rich foam, quick cleaning kitchen utensils, tableware surface stains/oil stains, make kitchen utensils/tableware more clean and bright white, thoroughly clean.



H5227 漂白水
BLEACHING WATER

本品适用于白色及不褪色纯棉/麻质及人造纤维衣物的漂白，可漂去衣物上的果汁、咖啡、茶渍、血渍等有色污渍；亦适用于厨房瓷盆、浴缸、瓷砖、垃圾桶、厕所坐。

This product is suitable for bleaching of white and non-fading cotton/hemp and artificial fibers, and can be used to remove colored stains such as juice, coffee, tea stains and blood stains on clothes. Also applicable to kitchen porcelain basin, bathtub, tile, garbage can, toilet seat.